



S.A. FONDERIES DU LION N.V.
6373 FRASNES-COUVIN BELGIQUE-BELGIE
Tél. 060/31.14.53

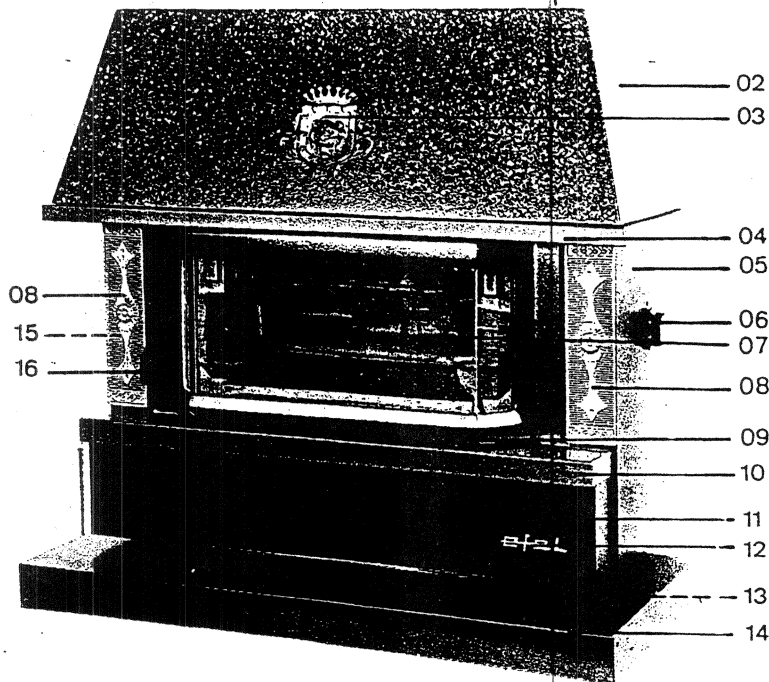
Sté FRANCAISE des FONDERIES DU LION
08460 SIGNY L'ABBAYE FRANCE
Tél. 19.32/60.31.14.53.

EFEL NORTH AMERICA inc.
4 CUMMINGS PARK
MA 01801 WOBURN U.S.A.
PHONE (617) 938-9175

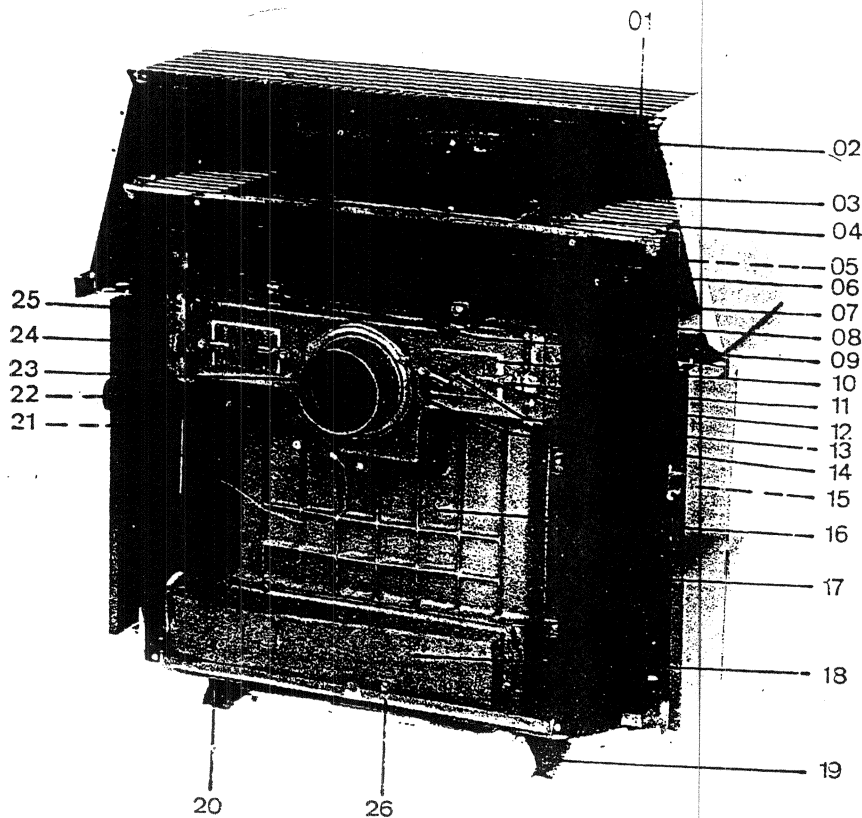
Bay front +
window

14 pieces of
glass

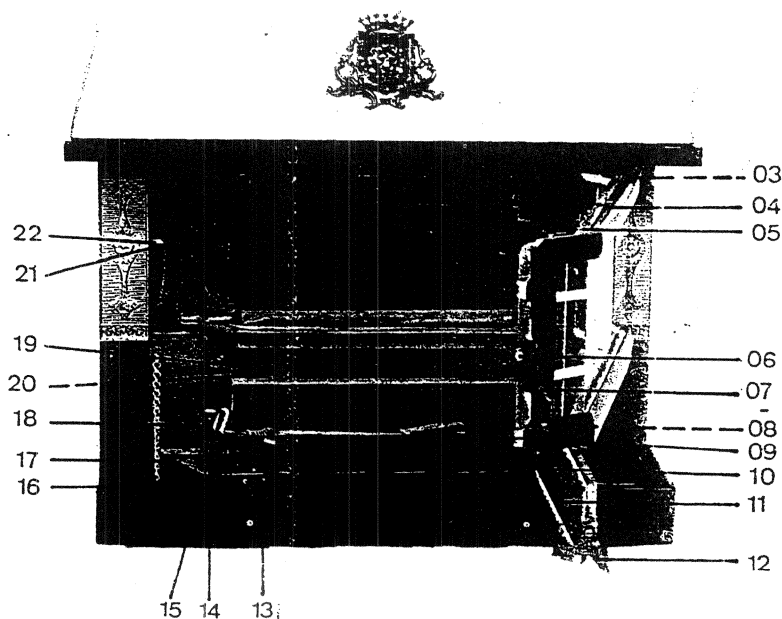
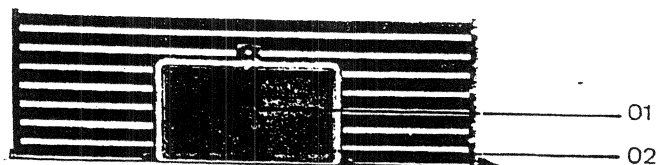
AMBASSADOR 08115
#350 081-15 01



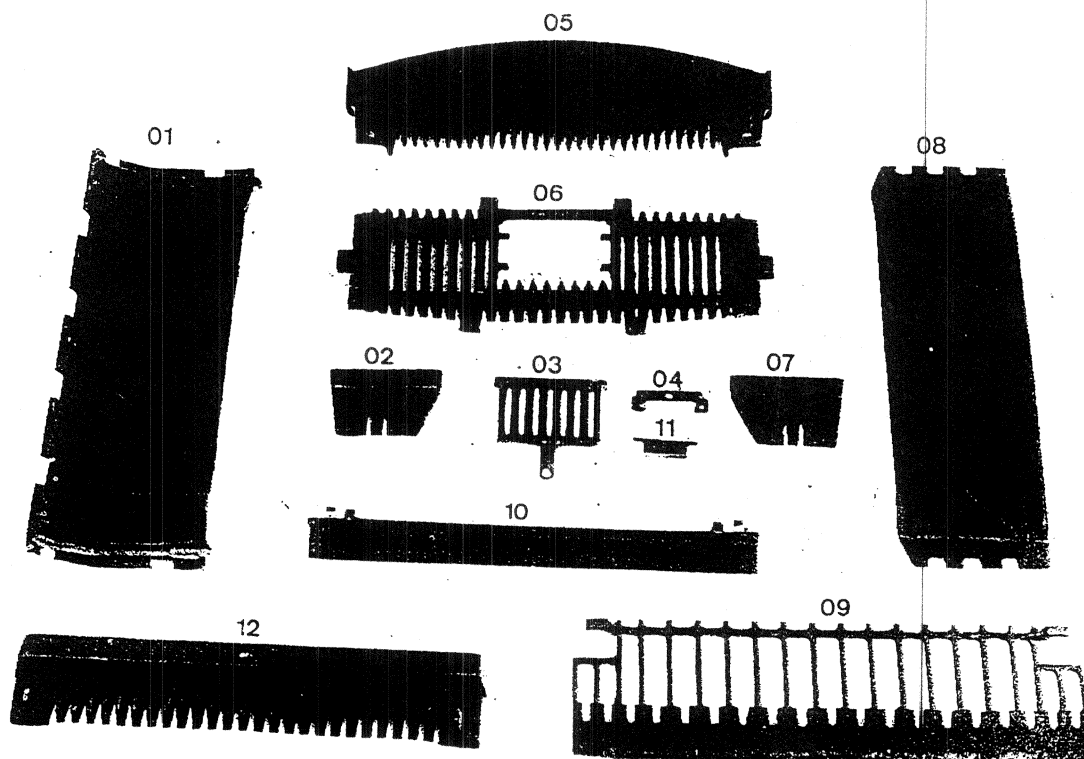
1	2	3	4	5	6
REF.	ORDER BESTELLUNG Nr	DESCRIPTION GREY	BESCHREIBUNG GRAU	CODE	POINTS PUNTEN
01*	1872	Lid	Haubenrost	081150364	428
02*	2006	Hood	Haube	081150304	978
03	46	Ornament for hood	Haubenverzierung	000304300	84
04*	617	Hood cornice	Haubenrahmen	081150314	210
05*	2404	Right side panel	Rechte Seitenwand	076150324	342
06	2328	Thermostat knob	Thermostatkнопf	001400600	46
07	2117	Stel glass foilds	Satz Pyrexlamellen	070110218	630
	2251	10 Foilds 43 x 223	10 Lamellen 43x223	020180200	45
	3827	2 Foilds 34 x 223	2 Lamellen 34x223	020180300	45
	2242	2 Foilds 34x223 bevelled	2 Lamellen Schraegkante	020180100	45
08	918	Front side panel	Seitliche Front	081150010	116
09*	738	Enamelled front door	Türrahmen	475150074	566
10*	2556	Lower front cornice	Rahmen für untere Front	081150334	190
11*	870	Lower front panel	Untere Frontblende	081150324	474
12	2336	Efel brand name	Efel Zeichen	000300600	26
13	2375	R-L front foot	R-L vorderer Fuss	078120161	92
14*	2538	Base frame	Sockel	076150484	863
15*	2452	Left side panel	Linke Seitenwand.	076150314	342
16*	510	Latch	Klinke	081150034	45
		BROWN GOLD	BRAUN GOLD		
*01	1873	Lid	Haubenrost	081150365	428
*02	2002	Hood	Haube	081150306	1955
*04	618	Hood cornice	Haubenrahmen	081150315	210
*05	3828	Right side panel	Rechte Seitenwand	076150325	342
*09	740	Enamelled front door	Türrahmen	475150075	566
*10	2557	Lower front cornice	Rahmen für untere Front	081150335	190
*11	871	Lower front panel	Untere Frontblende	081150325	474
*14	2534	Base frame	Sockel	076150485	863
*15	3829	Left side panel	Linke Seitenwand	076150315	342
*16	511	Latch	Klinke	081150035	45



1	2	3	4	5	6
REF.	ORDER BESTELLUNG Nr	DESCRIPTION	BESCHREIBUNG	CODE	POINTS PUNTEN
01	100	Lid axis 10 p.	Haubenrostspindel 10 st.	001711200	46
02	3232	Cast iron plate	Kochplatte	081150020	536
03	3361	Loading funnel	Bewegliche Füllschachtplatte	076150050	302
04	3252	Lower cast iron plate	Untere Kochplatte	070110114	697
05	22	Rear heightening piece	Zwischenstück Rücken	070110150	110
06	1478	Superior back of sheet metal	Oberer Blechrücken	076150401	85
07	3832	Hood support	Halierung für Haube	081150350	104
08	2779	Front part of recuperator	Wärmetauscher vorderer Teil	062110020	3
09	557	Internal smoke pipe	Innerer Rauchgaskanal	068110190	12
10	31	Asbestos for sweeping plug	Asbest Entrusstecker	000104700	
11	3527	Screw for sneeping plug 10 p.	Schraube Entrusstecker 10 st.	001705700	60
12	2304	Latch sweeping plug	Verschlussriegel Entrus	052630000	26
13	3218	Sweeping plug	Entrusstecker	056650300	26
14	2778	Back part of recuperator 165	Wärmetauscher hinterer Teil	062110010	240
15	639	Fire-box left part 1654	Linke seite Feuerraum	070110140	300
16	774	Fire-box rear part	Feuerraumrücken	068110120	1086
17	3838	Left back sheet metal	Linke Seite Feuerraum	081150430	86
18	3831	Primary air pipe	Primärluftkanal	068110140	204
19	2368	Left back foot	Linkerer Hinterer Fuss	068150301	88
20	2364	Right back foot	Rechter Hinterer Fuss	068150311	88
21	3303	Thermostat	Thermostat	001202500	500
22	638	Fire-box rigt part	Rechte Seite Feuerraum	070110130	300
23	301	Pipe	Rohrstutzen	058160110	87
24	3839	Right back sheet metal	Rechte Seite Blechrücken	081150440	86
25	551	External smoke pipe	Ausserer Rauchgaskanal	068110180	144
26	3833	Floor protector	Schutzplatte	070110590	81
	3834	Only for Germany	Obere Gusschutzplatte	081110440	156
	3835	Only for Germany	Untere Gusschutzplatte	081110450	106



1	2	3	4	5	6
REF.	ORDER BESTELLUNG Nr	DESCRIPTION	BESCHREIBUNG	CODE	POINTS PUNTEN
01	3200	Cast iron plug	Fülldeckel	070100290	277
02	37	Asbestos per m.	Asbest prs m.	000106400	12
03	441	Hinge for furnace door	Scharnier für Feuerraumtür	070100200	26
04	2876	Glass foilds lock	Pyrexhalter	070110540	31
05	2601	Cast iron door	Gussrahmen Pyrextür	070110050	367
06	3518	Screw for latch 10 p.	Schraube für Klinke 10 st.	001705400	69
07		Latch	Klinke		
08	439	Hinge for ash pan door	Scharnier für Aschenkastentür	068110130	26
09	2508	Poker	Schüreisen	000300700	104
10	340	Ash pan	Aschenkaste	070110570	273
11	2569	Ash pan door	Aschenkastentür	068110100	206
12	506	Latch for ash pan door	Klinke für Aschenkastentür	079160110	26
13	407	Hinge 04006	Scharnier 04006	000400600	12
14	1644	Bottom	Boden	076150070	863
15	751	Hook	Haken	000300500	46
16	3081	Locking bud	Verschluss "Spire Bouton" 10 st.	001703600	90
17	372	Small chain per m.	Kettchen pro. m.	000304200	23
18	819	Cast iron front	Front	070110100	1181
19	495	Slicing knife valve	Schürschlitzdeckel	062110020	26
20	3120	Slicing knife valve hinge	Scharnier Schürschlitzdeckel	064100450	26
21	3512	Screw for locking latch	Verschlusschraube	001704900	12
22	1709	Roller for screw 10 p.	Rolle 10 st.	001705200	58



	2	3	4	5	6
	ORDER BESTELLUNG Nr	DESCRIPTION	BESCHREIBUNG	CODE	POINTS PUNTEN
1	2524	Fixed plate of fire-box	Fixe Füllschachtplatte	070110200	416
2	609	Left part of vase	Linker Teil Feuerkorb	070110180	89
3	1905	De-ash grate	Ziehrost	068100330	66
4	3120	Valve stand	Halterung Schürschlitz-deckel	064100450	26
5	575	Rear part of vase	Hinterer Teil Feuerkorb	068110230	621
6	1834	Bottom grate	Feuerrost	068110270	334
7	600	Rigt part of vase	Rechter Teil Feuerkorb	070110190	89
8	3359	Loading funnel	Bewegliche Füllschttplatte	070110210	312
9	3837	Grate to burn wood	Frontgitter	070110160	800
10	761	Deflector	Deflektor	070110220	66
11	495	Poker valve	Schürschlitzdeckel	062100200	26
12	588	Front part of vase	Vorderer Teil Feuerkorb	070110170	432

EFEL NORTH AMERICA, INC.

Assembly, Installation, Operating, and Maintenance Instructions

AMBASSADOR 350 COAL STOVE

Model: 081.15

SAFETY NOTICE:

If this ambassador 350 coal stove is not properly installed, a house fire may result. For your safety, follow the installation directions. Contact local building or fire officials about restrictions and installation inspection requirements in your area.

C EFEL NORTH AMERICA, INC.
577 Main Street
Hudson, Ma. 01749
617-562-4401

EFEL North America, Inc.
Page 1.

SPECIAL NOTE

The installation of a barometric damper is recommended for all free standing wood stoves, providing the installation is in a newly constructed all fuel chimney of creosote deposits. The barometric damper is an automatic device designed to regulate the draft in a heating appliance which in turn stabilizes the chimney temperatures and decreases the amount of creosote build up, lessening the potential of chimney fires. Do not place the barometric damper greater than two (2) feet above the unit. Excessive draft will lead to poor control of the burning rate and possible overfiring of the stove. Most barometric dampers are calibrated in inches of water column and can be set to draft requirements of -.03 to -.08 inches.

READ INSTRUCTIONS CAREFULLY BEFORE STARTING.

EFEL NORTH AMERICA, INC.

Assembly, Installation, Operating, and Maintenance Instructions

EFEL AMBASSADOR 350 COAL STOVE

Model: 081.15

- Do not connect this unit to a chimney flue serving another fireplace.
- Read all instructions completely before beginning.
- Unit must be properly assembled and installed or listing will be void.
- Installations other than those specifically covered herein have not been confirmed by test and are not covered by the listing.
- Unit must be installed per all local codes. A building permit must be obtained before installing.
- Save these instructions for future reference.

Your unit comes completely assembled except for the feed lid, adjustable coal hopper plate, and optional front grate. In addition to these items, a separable handle, poker, ash pan, and wall hanging bracket should be supplied with each unit.

EFEL AMBASSADOR 350 COAL STOVE

Model: 081.15

ASSEMBLY INSTRUCTIONS

1. Remove all parts from the shipping carton and check for damage. If any damaged pieces are found, contact the shipping company immediately. Do not install unit if damaged or missing parts.
2. Place the adjustable coal hopper plate inside the firebox through the glass door opening. The arrow cast on the plate should face forward and be toward the right side of the unit. Raise the plate up into the hopper. Hang the plate on the two "J" shaped hooks on the back side of the fixed hopper plate using one of the three stair notches on each side of the adjustable plate.
3. Open the decorative outer casing top grill and place the feed lid in place on the feed opening located in the top plate of the unit.
4. An optional front grate may be installed over the front door opening to protect the door glass from the fuel bed. If the optional front grate is used, rotate the grate so that the two mounting tabs are at the top and insert the tabs into the "I" shaped brackets located on each side of the door opening just inside the unit. Lift the grate up and slide the bottom behind the ridge which runs across the bottom lip of the door opening.
5. Read the Installation, Operating, and Maintenance Instructions.
6. Your unit is now ready for installation.

EFEL AMBASSADOR 350 COAL STOVE

Model: 081.15

INSTALLATION INSTRUCTIONS

Read all instructions carefully before starting the installation!

DO NOT INSTALL IN A MOBILE HOME

1. Install a 6-inch diameter elbow on the flue increaser by sliding the elbow over the large end of the increaser. Rotate the elbow so that the crimped end is pointing upward. Press the elbow firmly onto the increaser and fasten using three stainless steel sheet metal screws.
2. Position the unit at the intended place of installation, making sure that the clearances between the unit and surrounding construction are at least as great as the minimum clearances listed below. The minimum clearances are shown from the sides of the elbow outlet.

The following minimum clearances to adjacent combustible materials must be maintained:

- a. 22 inches to the backwall as measured from the back of the chimney connector.
- b. 32 inches to the nearest side wall as measured from the side of the chimney connector.
- c. 48 inches to the nearest furniture or drapery as measured from any portion of the unit or chimney connector.

(REFER TO ILLUSTRATION NO. 1)

Use a plum-bob to mark where the chimney will penetrate the ceiling directly above the elbow. Check to make certain that no cross members in the ceiling or roof will be cut. Reposition the unit if necessary, being careful not to move closer than the minimum clearances to combustibles. When positioning the unit, make certain it is parallel to the rear wall by measuring the clearance at each rear corner.

EFEL North America, Inc.

Page 5.

EFEL AMBASSADOR 350 COAL STOVE

Model: 081.15

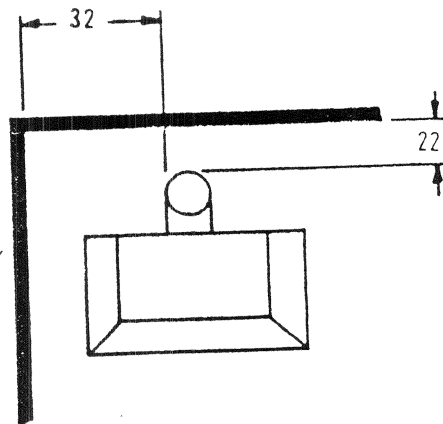
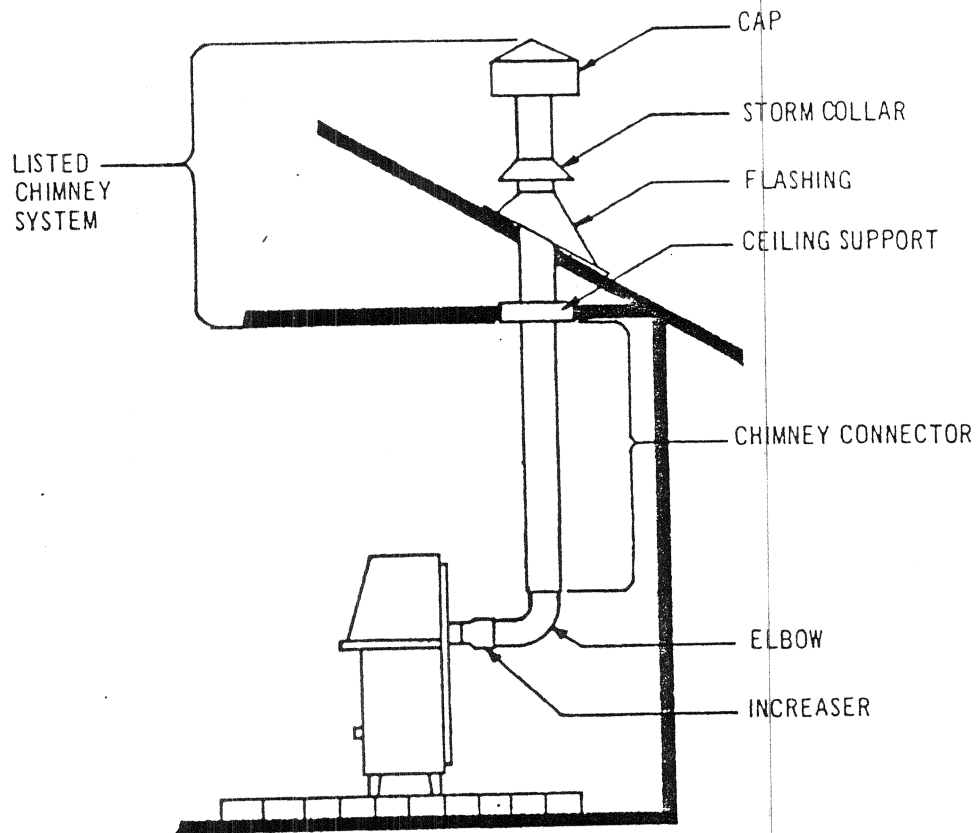


ILLUSTRATION NO. 1

ILLUSTRATION NO. 2



EFEL AMBASSADOR 350 COAL STOVE

Model: 081.15

3. Install the chimney system through the ceiling and roof directly above the elbow per the chimney manufacturer's instructions. The chimney must be a 6-inch diameter Underwriters Laboratories listed low Heat Residential Appliance Type Chimney (All Fuel). Before installing, use the plumb-bob to make certain that the chimney will be directly above the elbow on the unit.

(REFER TO TYPICAL INSTALLATION, ILLUSTRATION NO. 2)

FLOOR PROTECTOR:

4. A noncombustible floor protector must be installed under the unit. The floor protector must extend a minimum of 16 inches beyond the front openings of the units, 8 inches beyond each side of the unit, and 8 inches beyond the back of the chimney connector (elbow). mark the position of the required floor protector on the floor, then remove the unit.
5. The floor protector must be a minimum of a single layer of 2½ inch thick common solid brick on top of 26 gauge sheet steel, or a single layer of 3/8 inch thick asbestos millboard, or equivalent. Consult your local building inspector to determine what constitutes an acceptable equivalent.

If brick is used, it must be mortared in place or otherwise suitably restrained from movement. An acceptable minimal floor protector could be constructed as follows:

- a. Cut a piece of 26 gauge low carbon steel sheet to the proper size and shape to cover the entire floor area under the brick to be used. Position the steel sheet, aligning it with the marks on the floor.
- b. Place a single layer of brick on top of the sheet metal.
- c. Push the bricks tightly together to eliminate any gaps.
- d. Fasten steel angle iron to the floor all around the edges of the brick to hold the brick in place.

Install the required floor protector.

(REFER TO ILLUSTRATION NO. 3)

6. Position the unit on the floor protector with the elbow directly below the chimney. Verify that the unit is at the proper clearances and parallel to the back wall.

EFEL North America, Inc.

Page 8.

EFEL AMBASSADOR 350 COAL STOVE

Model: 081.15

7. Slide a section of chimney connector up into the chimney several inches with the crimped end pointed upward. Place another section of chimney connector on top of the 4elbow on unit. Be sure to position seams toward the back for aesthetics.

Place additional lengths of chimney connector on the bottom section as needed to reach the top section. Crimps must all point up. Slide the top section of chimney connector down to engage with the lower section of chimney connector. The top section of chimney connector must still extend up into the chimney a minimum of 2 or 3 inches.

Chimney connector must be 6 inch diameter black or blued steel, 24 gauge minimum thickness. Do not use galvanized steel chimney connector. For the State of Massachusetts, all chimney connectors must be 22 gauge minimum black or blued steel.

8. Check that all clearances are still within the allowable.
9. Secure adjoining sections of chimney connector and elbow to each other with three stainless steel sheet metal screws equally spaced around each joint. Do not secure the chimney connector to the chimney with sheet metal screws.
10. Secure the wall hanging bracket to the wall in a convenient location for storage of the separable handle and poker.
11. Read the Operating and Maintenance Instructions.
12. Your unit is now ready for operation.

SPECIAL NOTE:

This unit must be installed and used in accordance with manufacturer's directions and local building codes. Please contact your local building or fire officials about restrictions and installation inspection requirements.

EFEL AMBASSADOR 350 COAL STOVE

Model: 081.15

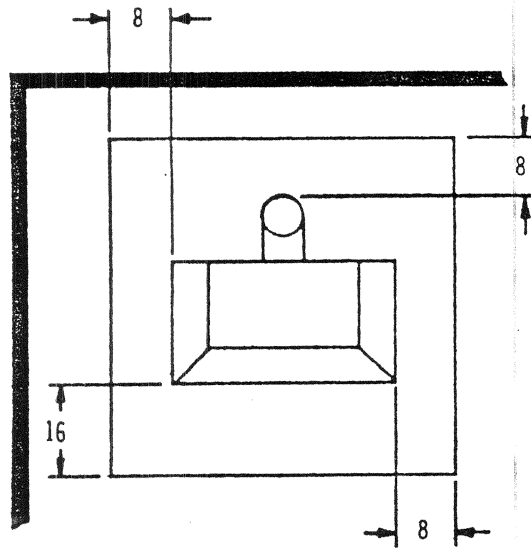


ILLUSTRATION NO. 3

EFEL AMBASSADOR 350 COAL STOVE

Model: 081.15

OPERATING INSTRUCTIONS

WARNING:

CAUTION:

Risk of excessive temperatures and damage to this unit may occur if the proper coal is not used.

This room heater is a heat producing appliance and may cause severe burns if touched. KEEP CHILDREN AWAY! All furnishing and other materials should be kept a considerable distance from the appliance.

Do not overfire: If any portion of unit or chimney connector starts to glow, you are overfiring.

This unit is designed as a radiant room heater and should be used for not other purpose.

FUELS:

Your unit is designed for operation with anthracite coal only. DO NOT USE OTHER FUELS. Use 20/30 ($\frac{3}{4}$ " to $1\frac{1}{8}$ "), 12/22 ($\frac{1}{2}$ " to $\frac{7}{8}$ "), or 6/12 ($\frac{1}{4}$ " to $\frac{1}{2}$ ") anthracite coal only. DO NOT BURN TRASH OR GARBAGE.

1. First six fires should be small in order to properly cure the case iron parts and paint. Some smoking may occur during the first few fires as the paint cures. You may wish to partially open a window to minimize discomfort during this curing period.
2. Be sure to provide combustion air into the dwelling when using a burning appliance. A partially open window or outside air register in the vicinity of the unit would be acceptable.

CAUTION:

Heating the air in a closed building decreases the relative humidity of the air, which will dry wood and other combustible materials. This drying lowers the ignition temperature of these materials, thus increasing fire hazards. To reduce the risk of fire, some provision should be made for replenishing moisture to the air whenever a structure is being heated for extended periods.

EFEL North America, Inc.

Page 11.

3. The intensity of the fire can be controlled by the uses of the thermostatic combustion air (draft) control on the right side of the unit. By turning the knob to a higher setting (clockwise), a hotter fire will result. By selecting a lower ssetting (counter-clockwise), you will have a cooler fire which will last longer.

4. **UNATTENDED FIRES**

CAUTION:

Many structure fires have resulted when a slow burning fire has been left unattended for any extended period of time (such as when "banking" a fire for a long over-night burn). These fires normally occur because combustible materials close to an appliance become heated to the ignition point by an overfired appliance which the operator thought was safely "throttled down".

Fire intensity is a function of several factors. One of these factors is **DRAFT**. Normally, increasing the draft increases fire intensity. Conversely, increasing the fire intensity will increase draft. Draft can also be affected by external factors such as wind strength and direction, outside temperature, airflow in or out of the structure, and so forth. If one of these factors changes, the draft of a low-burning appliance may increase. This increased draft may cause dangerously high temperatures to develop, possibly causing failure of the unit of flue, or ignition of nearby combustibles. Closing down the combustion air flow ("draft") controls (even on a thermostatically controlled unit) may not guarantee that this will not happen.

Exercise extreme caution if a fire must be left unattended.

5. A separable handle has been supplied with your heater for operating the closures and handling the ash pan. Use it to avoid burns. Always return the handle to the wall hanging bracket after use.

6. **CAUTION:**

Top feed lid must be closed during firing except when adding fuel. Keep face and hands away from opening.

Front firebox door must be closed during firing except when starting fire.

Keep ash door closed during firing of the heater to avoid developing excessive temperatures.

7. FIRING THE UNIT

CAUTION:

Use anthracite coal only - Do not use high volatile types of coal.

- a. Before starting, fully open the chimney connector flue damper if one is installed.
- b. The adjustable coal hopper plate can be adjusted for the size of coal used. The top stair is intended for 20/30 ($3/4"$ to $1-1/8"$), the center one for 12/22 ($1/2"$ to $7/8"$), and the bottom for 6/12 ($1/4"$ to $1/2"$) grind coal. Set the hopper plate at the stair intended for the coal being used for the first fire, then experiment to determine the best setting for the coal being used.
- c. To start, turn draft control knob to its maximum setting and place a small amount of wadded paper and kindling on the grate at the bottom of the firebox. This may be done through the front firebox door. Light paper with a match, then close and latch the door.

d.

CAUTION:

Never use gasoline, gasoline type lantern fuel, kerosene, charcoal lighter fluid, or similar liquids to start or "freshen up" a fire in this heater. Keep all such liquids well away from the heater while it is in use.

- e. Continue to fire with kindling, adding a handful of coal each time kindling is added until coal is burning well.

Go slow. Coal takes time to start and must develop a good bed of live coals to burn properly. This is especially true of the harder types of coal. Once the coal is burning well, stop adding wood.

Add fuel through the top feed opening only. **Do not use front door.**

- f. Once a good bed of live coals is established in the grate, coal may be added as high in the hopper as desired to produce a long lasting fire.
- g. Adjust the thermostatic draft control to obtain the desired fire intensity.

- h. Occasionally the fire must be stoked to clear the grate of accumulated ash. Clearing the grate will allow combustion air to flow up through the fire bed for proper combustion.

The fire can be stoked or stirred by inserting the fire rake provided through the three "clack-valve" covered slots located in the front plate behind the ash door cover. Insert the fire rake and move it left-to-right several times to shake down the accumulated ash.

Always make sure that the clack-valves are closed after stoking.

- i. After the fire has died and the unit has cooled, the flue damper (if installed) may be closed to keep heated room air from escaping up the chimney.

8. CONTROL AND MEASUREMENT OF CHIMNEY DRAFT.

Coal burning heaters are designed such that the fuel sits on a grate which separates the firebox from an ash compartment.

Combustion air enters the ash compartment below the fuel load and the natural draft created by the chimney pulls the combustion air up through the grate and the fuel load. Due to the low amount of volatile materials in coal, this arrangement is necessary to get the coal to burn properly.

As the draft increases in such a coal unit, more air moves through the fuel load, which fans the fire and makes it burn hotter. Conversely, as the fire becomes hotter, the air moving through the firebox is heated more, which increases the draft intensity. This "forge effect" can cause dangerously excessive temperatures to develop. Therefore, it is important to supply some means for controlling the draft intensity in any unit intended for burning coal. The thermostatic draft control on your unit is designed to control flue draft by controlling the intensity of the fire which generates the draft.

For proper operation, your unit should have a maximum flue collar draft of 0.06 inches of water. If you want to check the draft you can do so by obtaining and using an appropriate flue draft gauge following the gauge manufacturer's instructions.

11. CARBON MONOXIDE

Carbon monoxide is a colorless, odorless gas which is very deadly. While carbon monoxide cannot be smelled, there are other gases also being produced, known as aldehydes. These have a distinctive odor described as "sour". Thus, a sour odor coming from your unit indicates that carbon

monoxide is being produced and is somehow entering the space around the heater. The first physical symptoms of carbon monoxide poisoning will be a severe headache, dizziness, and possibly an upset stomach. If sour odors are noticed or the above symptoms are noticed then take the following actions:

- (1) Immediately open the doors and windows of your house and let some fresh air in.
- (2) Shut down the heater by closing the draft control.
- (3) Investigate further to determine if the heater or the chimney connector is leaking combustion products.
- (4) Check the chimney thoroughly as it may have become partially blocked.
- (5) If the source of the problem cannot be determined, call in a reputable installer or qualified person.
- (6) Correct before again burning.

CAUTION:

Hot while in operation. Do not touch, keep children, clothing and furniture away. Contact may cause skin burns. See name plate and instructions.

12. READ MAINTENANCE INSTRUCTIONS.

EFEL AMBASSADOR 350 COAL STOVE

Model: 081.15

MAINTENANCE INSTRUCTIONS

1. Always keep the area around the unit clean and clear of furniture and other objects.

Keep all furniture and drapery a minimum 48 inches away from the heater.

2. DISPOSAL OF ASHES:

Ashes should be removed from ash pan when cold. Ashes should be placed in a metal container with a tight fitting lid. The closed container of ashes should be placed on a non-combustible floor or on the ground, well away from all combustible materials, pending final disposal. If the ashes are disposed of by burial in soil or otherwise locally dispersed, they should be retained in the closed container until all cinders have thoroughly cooled.

3. Clean the heater surface with a dry or slightly damp cloth. In case of condensation, clean the affected areas before they dry.

The glass door panels can be cleaned with any standard glass cleaning solution.

DO NOT CLEAN UNIT WHILE HOT

4. When coal is burned slowly it produces a by-product called "fly-ash". Part of this fly ash is carried up the flue by the natural draft created by the fire. Fly ash may accumulate in the flue, particularly in any horizontal portions such as the elbow of a rear vented appliance, and cause a restriction of the flue. The unit, chimney connector and chimney should be inspected frequently during the heating season to determine if fly ash has accumulated. If fly ash has accumulated, it should be removed.

Accumulated fly ash can be removed from the wrap-around flue gas manifold by removing the four inspection/cleaning port covers. To remove, rotate the latch arms upward and withdraw the cover. To install, reverse this procedure. Make certain that the gasket is clean and in place and that a proper airtight seal is made.