

6

Gas Information

A. Fuel Conversions

Before making gas connections ensure that the appliance being installed is compatible with the available gas type.

Any natural or propane gas conversions necessary to meet the appliance and locality needs must be made by a qualified technician using Hearth & Home Technologies specified and approved parts.

1. Converting to LP Gas

NOTE: Gas conversions should only be performed by a qualified service person, and/or where required by state and local codes, licensed installer/service technician. In the Commonwealth of Massachusetts, installation must be performed by a licensed plumber or gas fitter.

Kit Contents: Replacement orifice; replacement pilot injector; valve regulator; conversion label.

Tools Required: Power drill (a 90° handle is helpful); #2 Phillips bit; 7/16" wrench; slotted screwdriver or Torx TH20; 5/32 in. Allen wrench; 5/8 in. open end wrench.

Remove front (if installed), glass, and logs (if installed.)

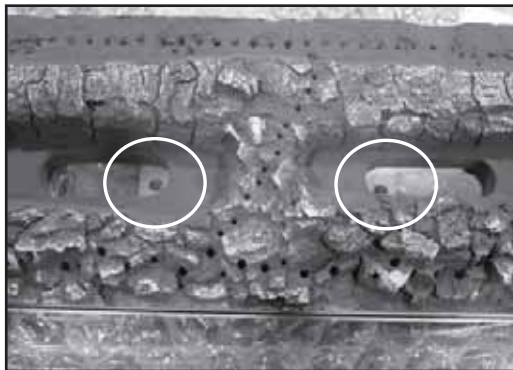


Figure 6.1 Using the #2 Phillips screwdriver remove the two (2) 1/4" x 20 screws securing the burner as indicated. Lift burner out of firebox.

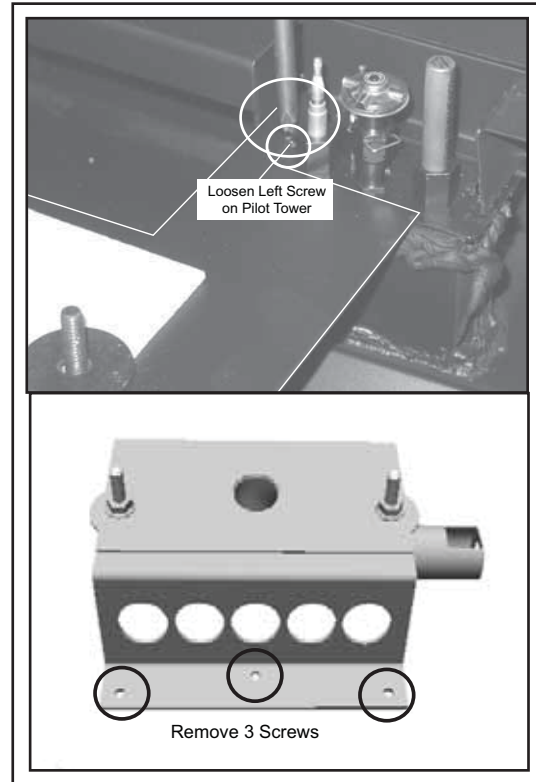


Figure 6.2 Remove the burner support by **loosening** the left screw on the pilot tower, and removing the three screws on the front side of the burner neck support.

Slide the burner neck support to the left.

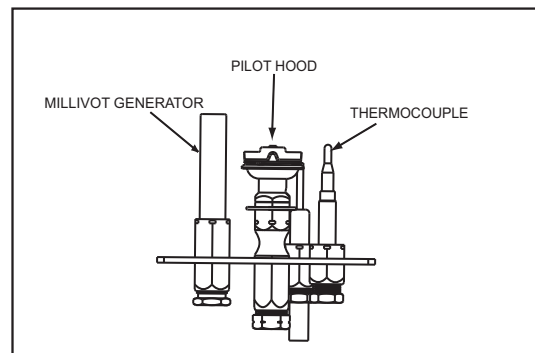


Figure 6.3 Pull off pilot hood and set aside.

NOTE: Do not remove retaining clip from hood.

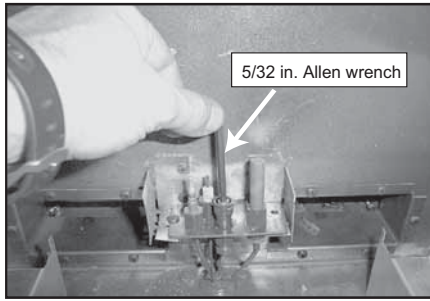


Figure 6.4 Use a 5/32 in. Allen wrench to remove the pilot injector. Replace pilot injector with the one supplied with the appliance (#35 for Propane, #62 for Natural Gas).

Replace pilot hood, snapping into position.



Figure 6.5 Remove main burner orifice using a 5/8 in. wrench. Replace orifice with the proper size as indicated on for your gas type and venting.

	PROPANE	NATURAL GAS
TIARAI-B TOP VENT	.073 (49 DMS)	.120
TIARAI-B REAR VENT	.063	.111

Re-install burner by placing it into the firebox.

Installation is the reverse of the removal. Make sure to re-install the two 1/4 in. x 20 screws that secure the burner.

Re-install logs, glass and front.

2. Valve Regulator Replacement

⚠ WARNING	
	<p>Fire Risk. Explosion Risk.</p> <ul style="list-style-type: none"> Disconnect any electrical cords and turn off gas supply to unit before proceeding if converting fuel on an appliance already fully installed.

Remove upper and lower back shield. Loosen the set collars on the extension rods with the 3/32 in. Allen wrench. Remove the rods and adapter cap.

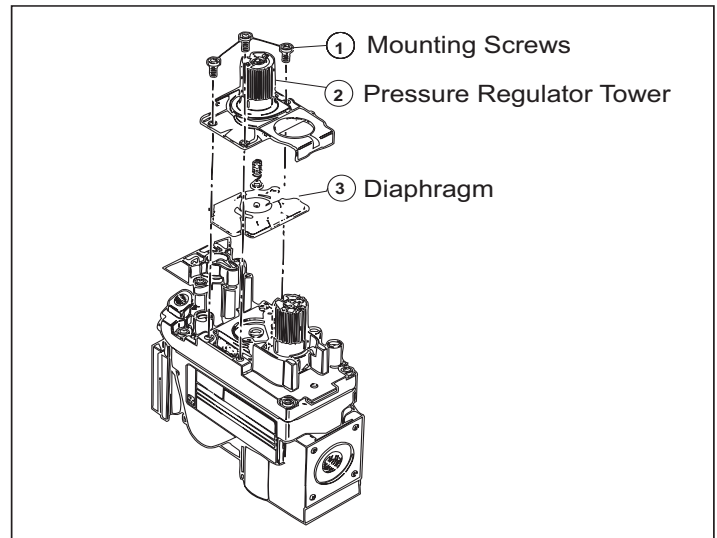


Figure 6.6 Turn control knob to the OFF position, ensure that gas supply to the valve has been turned off. Using a Torx TH20, or slotted screwdriver, remove the three pressure regulator mounting screws (1), pressure regulator tower (2), and diaphragm (3).

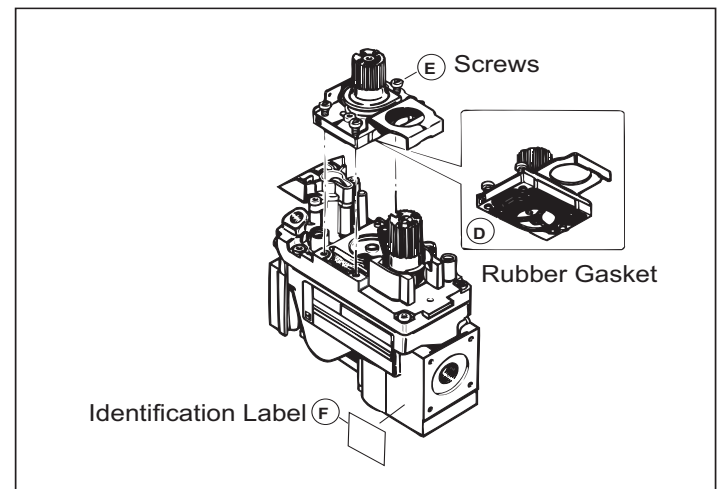


Figure 6.7 Ensure that the rubber gasket (4) is properly positioned and install the new HI/LO pressure regulator assembly to the valve using the new screws (5) supplied with the kit. Tighten screws securely. (Reference torque = 25 in./lb.) Install the enclosed identification label (6) to the valve body where it can be seen.

Fill out the conversion label and attach it to the valve cover.

THIS APPLIANCE HAS BEEN CONVERTED TO NG LP FUEL:		
(CIRCLE ONE)		
ORIFICE SIZES: FRONT	MIDDLE	REAR
MANIFOLD PRESSURE: _____		
INPUT: _____		
DATE OF CONVERSION: _____		
ALTITUDE: _____		
CONVERTED BY: _____		
COMPANY NAME: _____		