



Stowe DX

(Model 8322)

GAS-FIRED DIRECT-VENT HEATER

Parts List Exploded View & Key

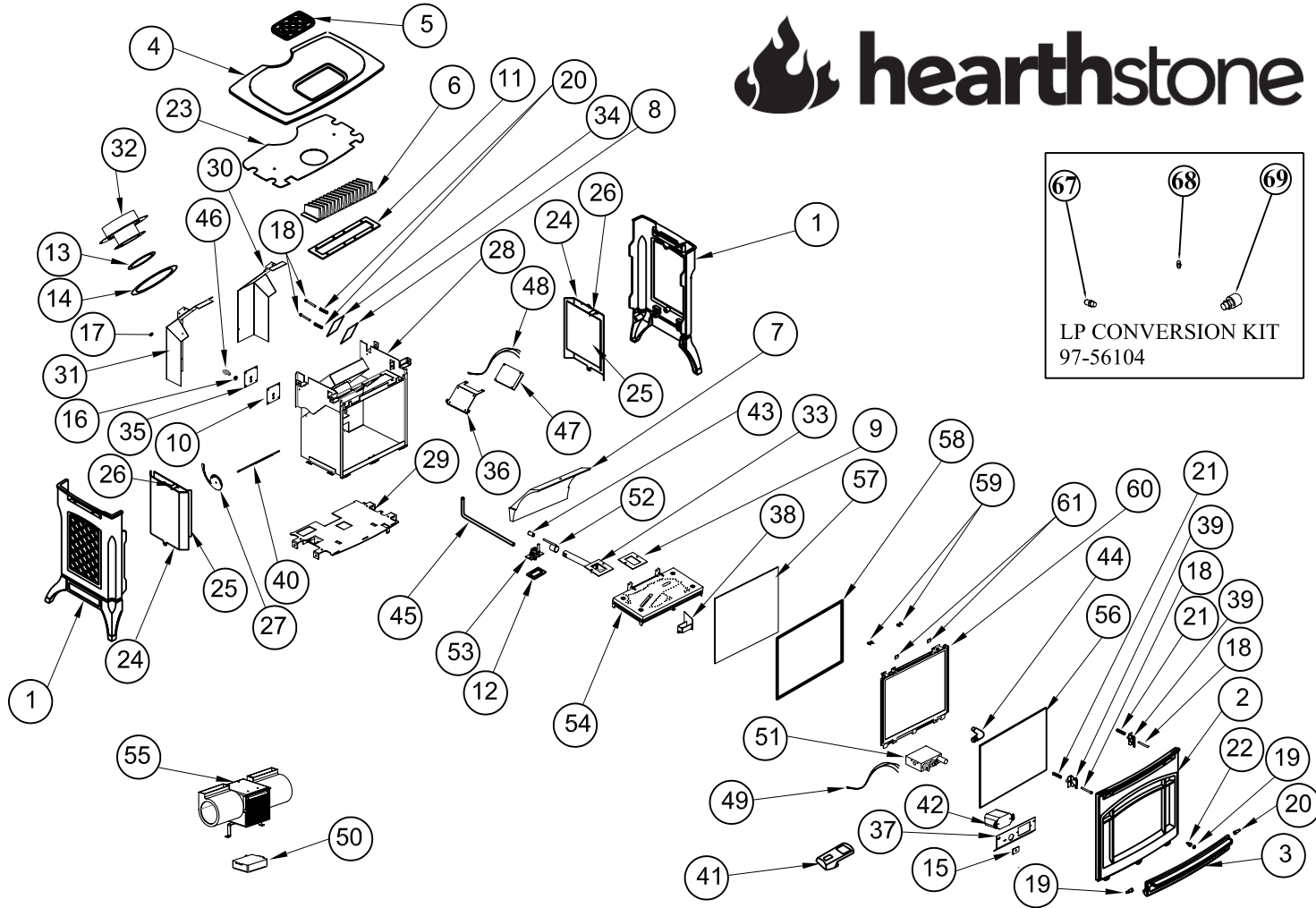
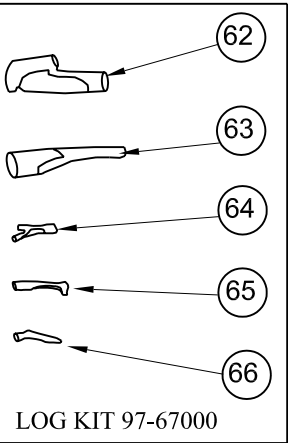
Operate and Maintain This Gas Heater
According To the Instruction Manual.

 <p>NATIONAL FIREPLACE INSTITUTE NFI CERTIFIED www.nficertified.org</p>	<p>We recommend that our gas hearth products be installed and serviced by professionals who are certified in the U.S. by the National Fireplace Institute® (NFI) as NFI Gas Specialists.</p>
--	--



- 🔥 **WARNING: FOLLOW THE INFORMATION IN THE OWNER'S MANUAL AND ANY KIT INSTRUCTIONS EXACTLY WHEN MAINTAINING THIS APPLIANCE! IF NOT, A FIRE OR EXPLOSION MAY RESULT CAUSING PROPERTY DAMAGE, PERSONAL INJURY OR LOSS OF LIFE.**
- 🔥 **WARNING: DO NOT STORE OR USE GASOLINE OR ANY OTHER FLAMMABLE VAPORS AND LIQUIDS NEAR THIS OR ANY OTHER GAS APPLIANCE.**
- 🔥 **A QUALIFIED INSTALLER, SERVICE AGENCY, OR GAS SUPPLIER MUST PERFORM INSTALLATION AND SERVICE OF THIS APPLIANCE.**

In the Commonwealth of Massachusetts, all installation of gas lines and gas fittings must be performed by a licensed gas fitter or licensed plumber.





Stowe 8322 Exploded View Key

Key	Component	Object Description	Qty
1	2310-331	SIDE	2
2	2310-431	FRONT	1
3	2310-433	VALVE CONTROL DOOR	1
4	2310-831	TOP	1
5	2310-835	GRILLE	1
6	2710-487	HEAT EXCHANGER	1
7	3120-150	BAFFLE: CERAMIC	1
8	3160-105	GASKET: DELAYED IGNITION RELIEF	1
9	3160-106	GASKET: VENTURI /BURNER	1
10	3160-107	GASKET: REAR ORIFICE PLATE	1
11	3160-150	GASKET:HEAT EXCHANGER,4"x14.5	1
12	3160-152	GASKET: PILOT,1.75"x3",ADHESIVE BACK	1
13	3160-155	GASKET: EXIT,4"x6"	1
14	3160-157	GASKET: INLET,6-1/2"x9-5/16"	1
15	3300-549	LABEL: IPI/CONTINUOUS PILOT	1
16	4200-0090	NUT: JAM,1/8" NPT,BRASS	1
17	4200-0340	1/4" PUSH NUT (AIR SHUTTER STOPPER)	1
18	4500-1420	SCREW: CAP,1/4-20x2-1/4",LOW PRO,SOCKET	4
19	4500-3085	SCREW: SHOULDER,5/16"Dx1/2"L,SOCKET	2
20	4700-0800	MAGNET: VALVE DOOR,3/4"Dx3/16"	1
21	5240-150	SPRING: COMPRESSION,17-7 PH SS	4
22	5300-160	MOUNT: MAGNET	1
23	5320-020	HEATSHIELD: TOP	1
24	5320-030	HEATSHIELD: SIDE,OUTER	2
25	5320-031	HEATSHIELD: SIDE,INNER	2
26	5320-032	SPACER: HEATSHIELD,SIDE	4
27	5322-078	HANDLE: RESTRICTOR DISC	1
28	5322-200	FIREBOX	1
29	5322-220	BASE: PLATE	1
30	5322-274	DEFLECTOR: FAN, REAR RIGHT	1
31	5322-275	DEFLECTOR: FAN, REAR LEFT	1
32	5701-924HB	COLLAR: INLET/EXIT,4"x6-5/8"	1
33	5710-015	VENTURI: BURNER TUBE	1
34	5710-100	PLATE:DELAYED IGNITION	1
35	5710-210	PLATE: REAR ORIFICE	1
36	5710-211	SUPPORT: DFC BOARD MOUNTING	1
37	5710-227	PANEL: CONTROL MODESTY	1
38	5710-277	PILOT SHIELD	1
39	5710-279	HANDLE: SPRING HOOK	2
40	5710-290	PLATE: RESTRICTOR	1
41	7000-393	REMOTE CONTROL: PROFLAME GT,BLK	1
42	7000-394	RECEIVER: PROFLAME, TIMER	1
43	7200-241	ORIFICE: BURNER HOOD,#41 (NG)	1
44	7210-008	FITTING 90 DEG 3/8" NPT X 3/8"COMP.	1
45	7211-018	TUBE: FLEX 12"	1
46	7211-020	FITTING 90 DEG 3/8-27 X3/8" COMP.	1
47	7211-101	DFC PROFLAME CONTROL BOARD	1

48	7211-102	WIRE HARNESS: DFC	1
49	7211-103	WIRE HARNESS: REMOTE CONTROL GTMS	1
50	7211-105	FAN CONTROL MODULE	1
51	7211-110	VALVE: STEP. NG, SIT	1
52	7211-220	SHUTTER: AIR CONTROL,PRIMARY	1
53	7211-395	PILOT: NG ASS'Y, IPI	1
54	7211-588	BURNER: EMBER	1
55	93-57220	BLOWER ASSEMBLY KIT	1
56	97-59010	FRONT GLASS SCREEN	1
	97-56110	GLASS ASSEMBLY KIT	
57	3030-060	GLASS:12.75"x15.23"x5mm	1
58	3160-081	GASKET: TAPE,3/4"x1/8",AD	5.6
59	4400-0200	RIVIT: 1/8" X 1/8" SS	4
60	5322-230	FRAME: GLASS	1
61	5870-095	CLIP: GLASS	2
	97-67000	LOG SET KIT	
62	7211-590	LOG: REAR	1
63	7211-591	LOG: CENTER BASE	1
64	7211-592	LOG: RIGHT, LOWER	1
65	7211-593	LOG: RIGHT, TOP	1
66	7211-594	LOG: LEFT, TOP	1
	97-56104	SOLD SEPERATELY LP CONVERSION KIT	
67	7200-253	ORIFICE: BURNER HOOD,#53 (LP)	1
68	7211-136	LP PILOT ORIFICE: .35MM (LP)	1
69	7211-344	LP REGULATOR	1