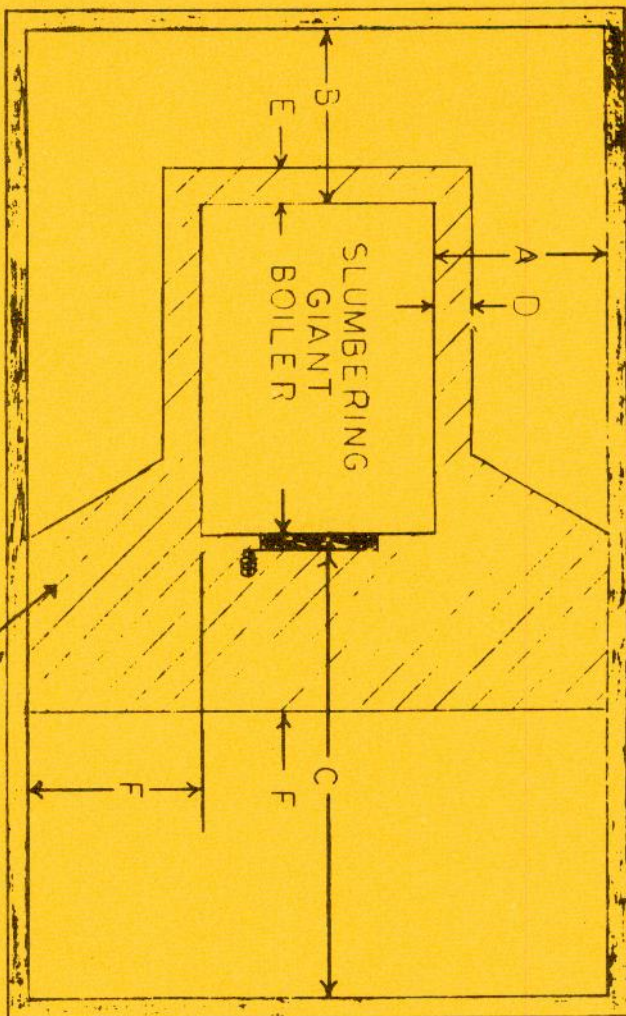


MINIMUM INSTALLING CLEARANCES



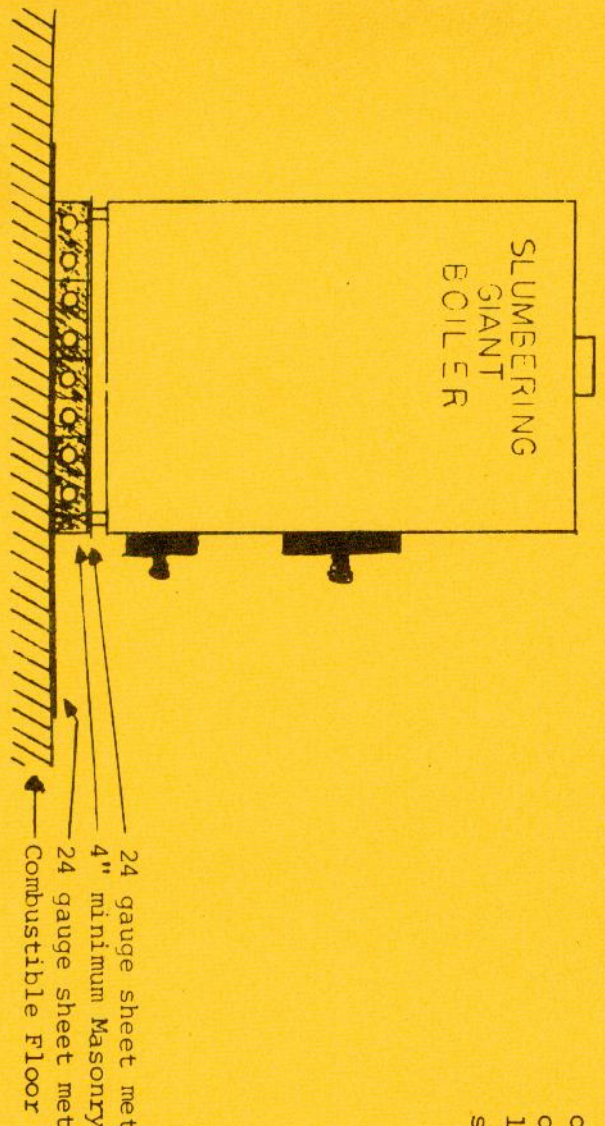
Combustible Walls Non-Combustible

A	24"	6"
B	27"	6"
C	48"	48"
D	6"	
E	6"	
F	18"	

Sheet Metal floor protection not needed on below grade masonry floors.

Stovepipe 18" from all combustibles

Do not store solid fuel within the clearances specified. Never set anything on top of the boiler. Keep all flammable liquids and substances out of the clearances specified.



SLUMBERING GIANT