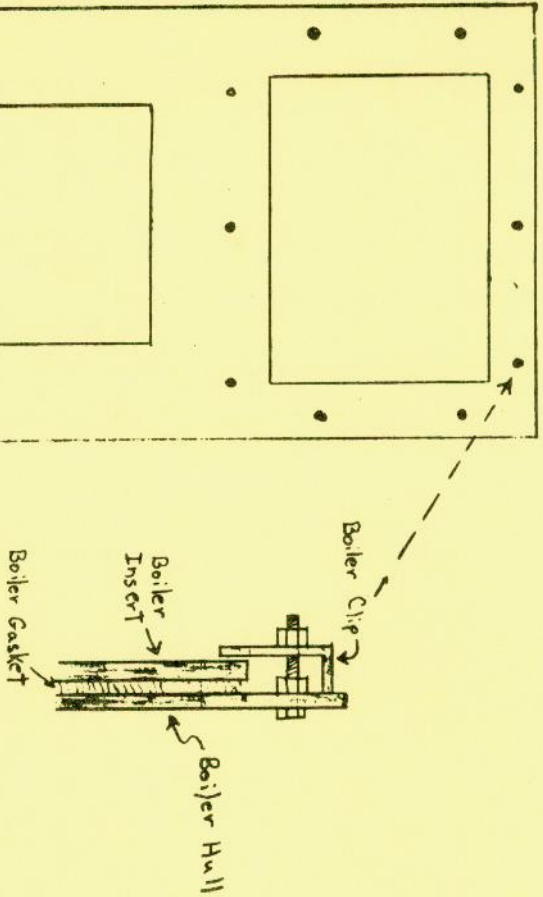


BOILER CLIPS

The illustration to the left shows the correct way to position the 10 boiler clips to secure the boiler into the hull. These should be tightened securely to compress the gasket.



AUTOMATIC DRAFT

The draft tube is secured to the boiler hull with the 3 #6 self tapping screws provided, with the 2 holes in the tube towards the right as in the illustration. Remove the draft baffle from the Erie Control and slip it into the draft tube, and refasten the draft baffle. Try operating manually by pushing on the bottom of the draft baffle to insure free operation. If the control hangs up, reposition draft baffle, as it is concentrically drilled to facilitate accurate positioning and free floating operation.

Automatic Draft Assembly

