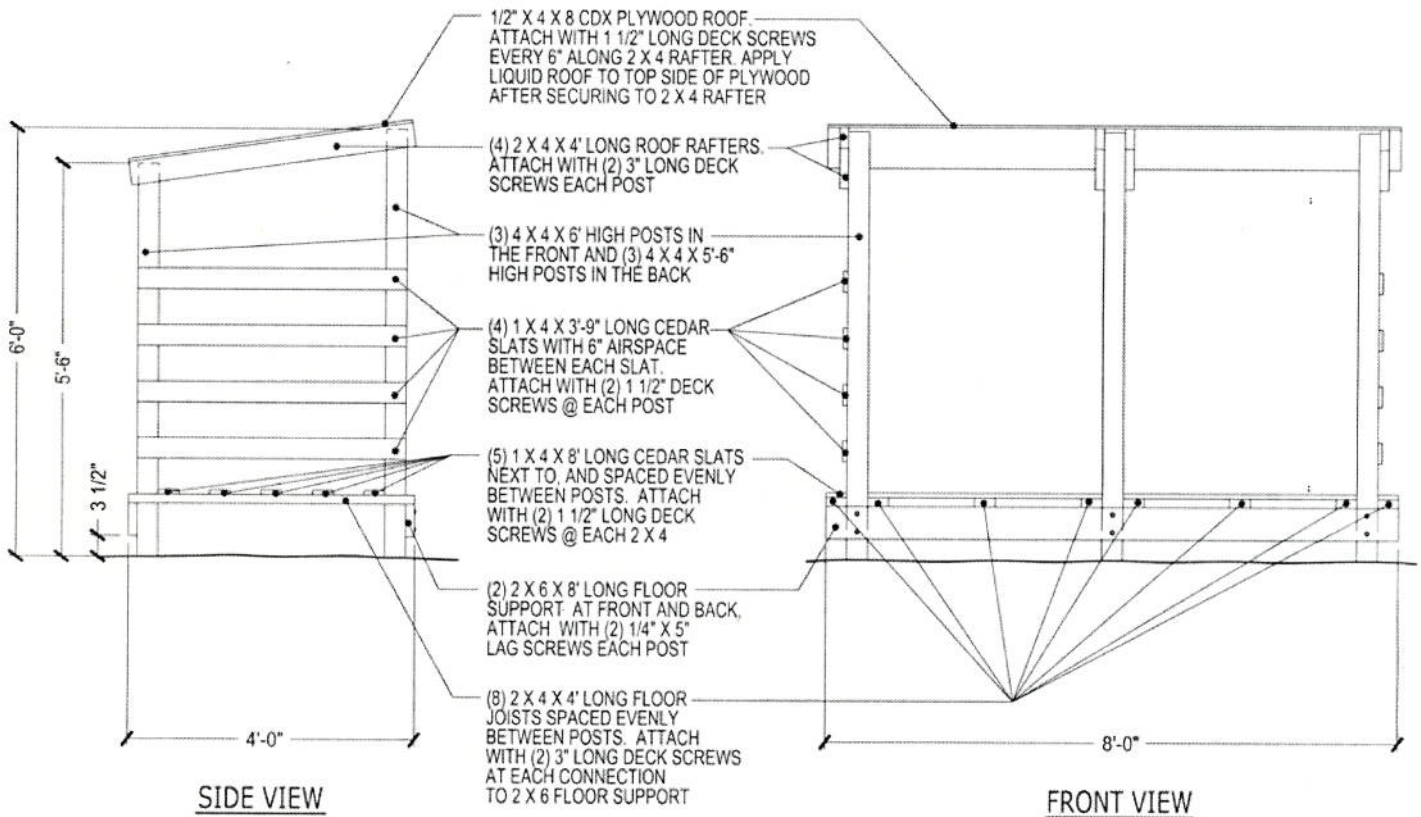
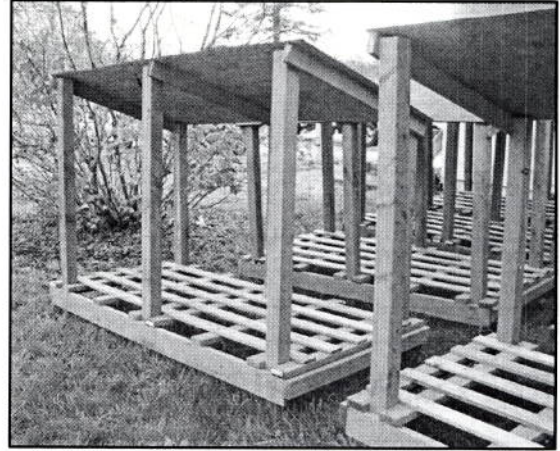


Modular Wood Shed (Courtesy of The Makah Nation, WA)

\$215 Wood Shed (price dependant on locality)

- Holds about one cord of wood
- Light enough to move by hand
- Easy to fabricate with mostly straight cuts and no mitered corners or joints
- Uses outdoor treated wood for the structure and liquid roofing primer for the roof
- Connectors and fasteners are galvanized
- Roof and sides are finished to owner specifications (e.g. composition, metal, wood shakes, etc.)
- Footings provided by owner (concrete post bases or pavers)



Modular Woodsheds

Materials List-1 Woodshed

Item	Quantity	Unit	Description	Unit Cost	Subtotal
Outdoor Treated Lumber					
2" x 6" x 8' long	2	ea	"post and beam" frame (already to length)	6.59	\$13.18
4" x 4" x 12' long	3	ea	"post and beam" posts (cut to 6' and 5 1/2' lengths)	17.35	\$52.05
2" x 4" x 8' long	5	ea	floor joists (cut to 4' long)		
2" x 4" x 8' long	3	ea	roof joists (cut to 4' long)		
total	8			4.27	\$34.16
1" x 4" x 12' long	4	ea	flooring slats (cut to 4' length)	3.97	\$15.88
1/2" x 4' x 8' sheets	1	ea	CDX (use full sheet)	13.97	\$13.97
1/4" x 6" galv. lag bolts	12	ea	"post and beam" assemble	0.79	\$9.48
3" long deck screws	1	Box	green coated deck screws square head	6.58	\$6.58
1 1/2" long deck screws	1	Box	green coated deck screws square head	6.58	\$6.58
Liquid Roofing	1	5 gal. bucket	black	43.99	\$43.99
Miscellaneous				Not to Exceed	\$20.00
Grand Total					\$215.87