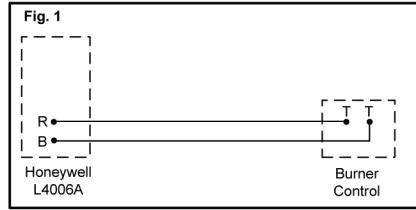
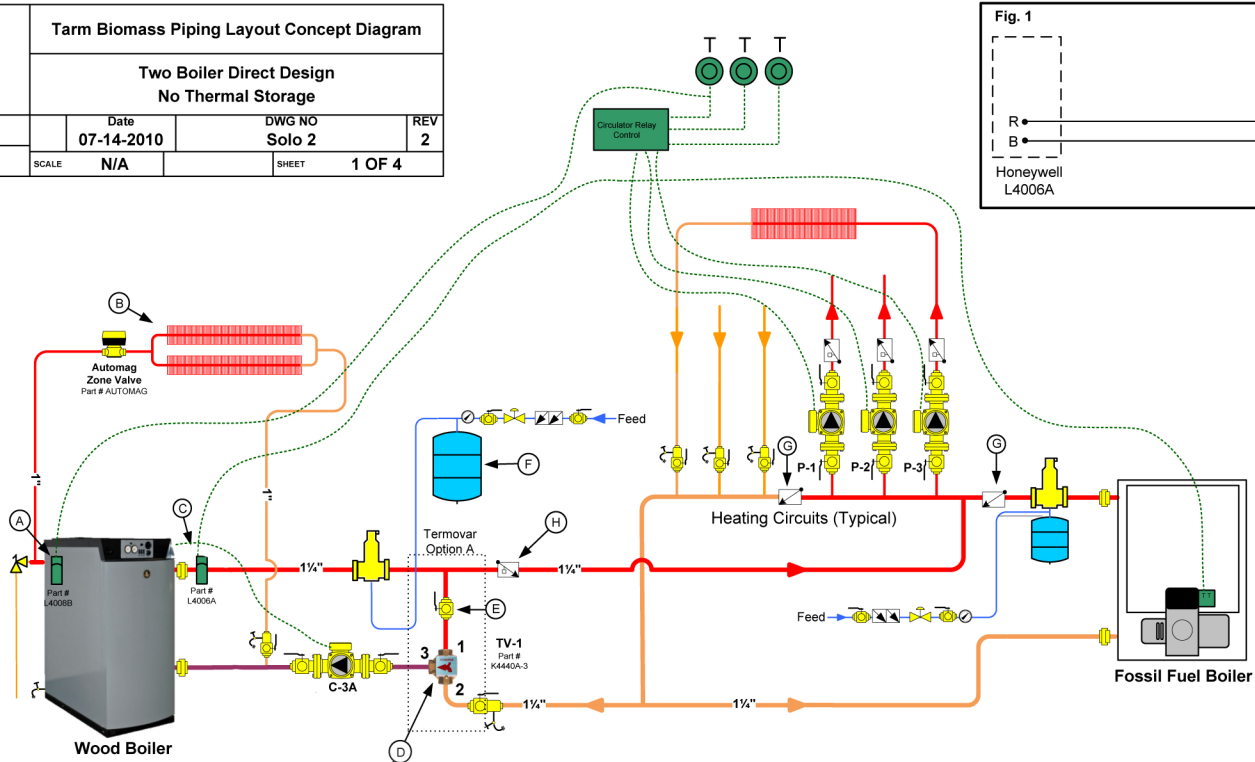


Tarm Biomass 4 Britton Lane Lyme, NH 03768		Tarm Biomass Piping Layout Concept Diagram Two Boiler Direct Design No Thermal Storage		
Drawn by: TSP	Date 07-14-2010	DWG NO Solo 2	REV 2	
SCALE N/A	SHEET 1 OF 4			



Symbol Key

	Circulator w/ Isolation Flanges		Central Air Separator
	Ball Valve		Zone Valve
	Purging Valve		Pressure Reducing Valve
	Weighted Check Valve		Pressure Relief Valve
	Backflow Preventer		Union
	Termovar Tempering Valve		Drain Valve
	Temperature/Pressure Gauge		Thermostat

SYSTEM NOTES:

- (A) Honeywell L4008B Overheat Aquastat Set to 200°F. Connected to the Largest Heating Circuit- **Used with the Solo Plus W/Analog Controller, Froling FHG, and Solo Innova.**
- (B) Emergency Gravity Flow Overheat Loop Needs to be 10% of Wood Boiler Output. Automag needs to be installed in the **horizontal** position.
- (C) An aquastat can be used to switch on fossil fuel boiler. Honeywell aquastat L4006A or equivalent (see Fig. 1) (Part #L4006A)
- (D) Termovar Mixing Valve
- (E) Balancing Valve Required. (Start with Valve Closed halfway, i.e., at 45 degrees)
- (F) Amtrol 60 or Equivalent Expansion Tank is Suitable for most Solo Plus Installations up to 86 gallons
- (G) Check Valve Should be a Swing Check and not a Weighted Check Valve to Prevent Ghost Flow to Heating Circuits.
- (H) Weighted check valve is needed to prevent ghost flow during fossil fuel operation.

This is only a **concept** drawing. Final design, installation and code compliance details are the responsibility of the designer/installer of the system.