



SUBMITTAL DATA

Coloplast Manufacturing HW Coil
Nationwide Coils Coil C-1

Hot Water Coil

Tag	Qty	Model	Footnotes	Comment
C-1	1	HW58S02B10-24x24-RH	a,b	

Construction and Performance Details

Tag	C-1
Air flow (SCFM)	1400
Altitude (ft)	0
Total capacity (MBH)	54.6
Entering dry bulb (°F)	55.0
Leaving dry bulb (°F)	91.0
Face velocity (ft/min)	350
Air pressure drop (in of water)	0.13
Air fouling factor (h-ft ² ·°F/Btu)	0.00000
Fluid	W
Entering fluid temp. (°F)	120.0
Leaving fluid temp. (°F)	109.0
Fluid flow rate (GPM)	10.0
Fluid velocity (ft/s)	5.46
Fluid pressure drop (ft of water)	13.7
Fluid fouling factor (h-ft ² ·°F/Btu)	0.00000
Fluid freezing temp. (°F)	32.0
Min. tube wall temp. (°F)	105.5
Coils per bank	1
Coil type	5/8
Fin height (in)	24.0
Fin length (in)	24.0
Face area (ft ²)	4.00
Rows	2
Fin spacing (fins/in)	10
Fin material	Al
Fin type	Sine
Fin thickness (in)	0.006
Tube wall thickness (in)	0.020
Turbulators	No
Number of feeds	2
Supply conn. size (in)	1.000
Return conn. size (in)	1.000
Weight (lb)	32
Est. Operating Wt. (lb)	40

Footnotes

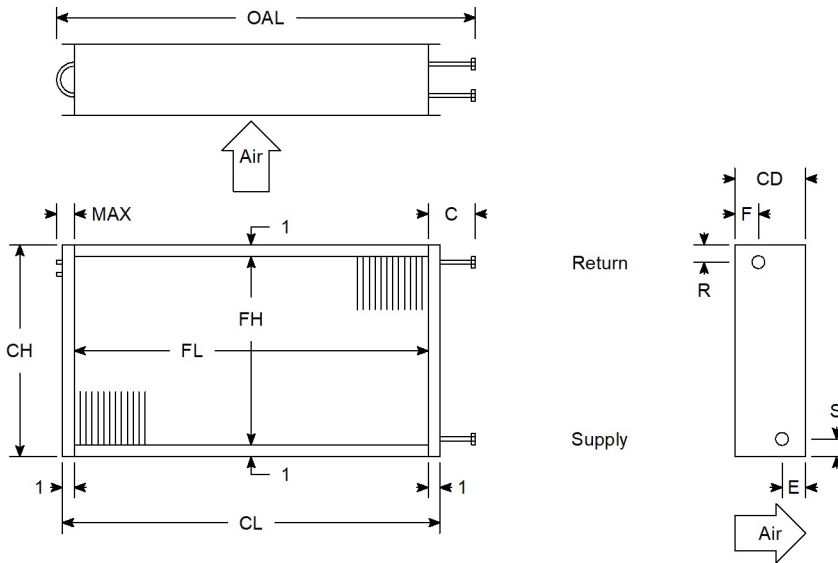
- (a) Certified in accordance with the AHRI Forced-Circulation Air-Cooling and Air-Heating Coils Certification Program which is based on AHRI Standard-410 within the Range of Standard Rating Conditions listed in Table 1 of the Standard. Certified units may be found in the AHRI Directory at www.ahridirectory.com.
- (b) Tube OD 0.625, Tube spacing 1.500 x 1.299



SUBMITTAL DRAWINGS

Coloplast Manufacturing HW Coil
Nationwide Coils Coil C-1

Drawings



Dimensions*

Tag	C-1
Model	HW58S02B10-24x24-RH
Weight	32
Fin material & type	0.006 Aluminum Sine-wave
Tube wall	0.02 / Smooth
Casing material / flange	16 ga. galv. steel (std) / Stacking
Coating	None
Turbulators	No
Supply / return conn. size	1 / 1
Connection type	MPT Copper
Number of feeds	2
FH / FL	24 / 24
CH / CL	26 / 26
OAL / CD	30 / 4
C	4
S / R	1.375 / 1.375
E / F	1.35 / 1.35
MAX	2

* All distances are measured as inches.