



3 was on before 11/12

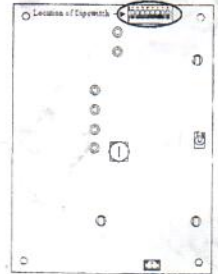
TECHNICAL BULLETIN

PC45 Optimized as a Pellet Stove (Use with Kit #1-00-06801)

Now, the best corn burning stove on the market can be a remarkable pellet burning stove in just 3 easy steps (without using a pellet burn pot):

1. Disconnect power cord. Access dipswitches by cutting through the label just above and right of the power light. The first four dipswitches can be seen by cutting the label. To access the last four switches you must bend the metal tab out away from the control. Now you should be able to see all eight dip switches in the down position which is "OFF". Using the tip of a pen, change dip switch settings to: #'s 1, 2, 7, & 8; ON while #'s 3, 4, 5, & 6 are OFF. (Switches 1 thru 3 control the amount of fuel for ignition only. If you need more fuel for ignition, add #3 on to above. If you need less fuel for ignition, turn off #2 and leave just #1 ON.)

Dipswitches located on face of circuit board.



2. Burn Pot Options

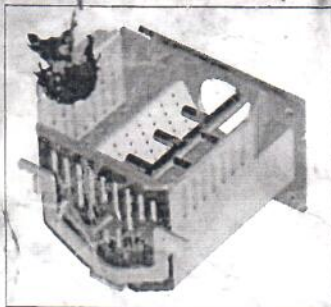
Both options use the burn pot that is factory installed (larger holes) in the PC45.

OPTION A:

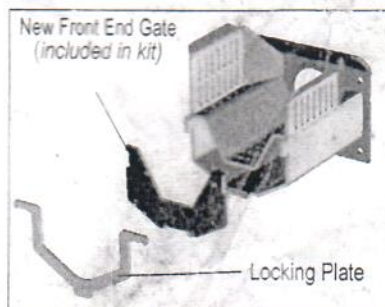
Change to the new front end gate by removing the locking plate and corn end gate. Remove the stirring rod by simply pulling it out of the auger. Install the new front end gate and secure with the locking plate as shown below. This option normally has a wider flame pattern but will need to have the ashes pulled off the front of the burn pot every couple of days.

OPTION B:

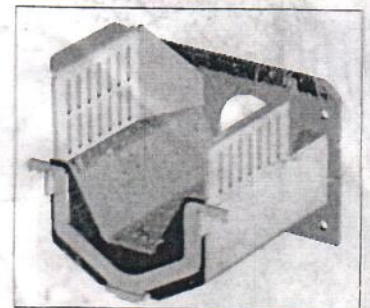
Leave the burn pot as is with the stirring rod in place. This configuration will have a narrower flame pattern but very little burn pot maintenance.



Corn Burn Pot as shipped.



New Front End Gate & existing Locking Plate.



New Front End Gate & existing Locking Plate in place

3. Install a new combustion blower inlet ring (behind the ash pan). Remove the ash pan. Open the inlet ring latch by lifting upward. Remove the inlet ring by pulling the right side toward you while shifting from left to right. Insert the new combustion blower ring by sliding the tab on the left side of the plate into the channel on the stove back. Close the plate and swing the latch down to secure it. Replace the ash pan. The larger hole in this new combustion ring will allow the PC45 to produce more heat with pellets. (Adverse effect with corn)

New Inlet Ring (larger hole) (included in kit)



Original Inlet Ring (smaller hole)

This conversion gives you a fully automatic pellet stove with 50,000 BTU/hr. Just as easy, reverse the process, and you are back to having

the best corn burning stove. y, faster ignition, and clean viewing glass.