

LAKEWOOD
Unicorn
Double Door
 with blower and heat exchanger

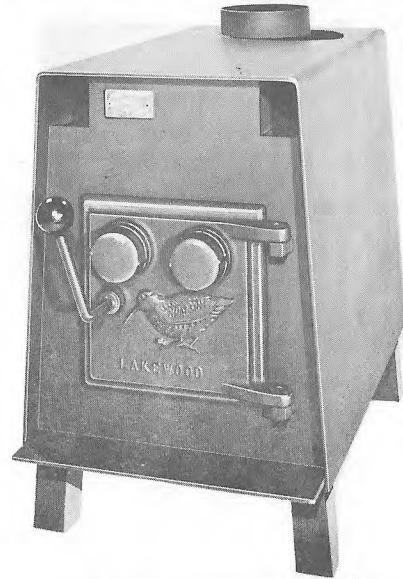


A compact efficient stove. Easily inserted into a fireplace or used as a free standing stove.

- Fully gasketed door for safety and control
- Baffled door for preheated combustion air
- Heat exchanger and blower for even heat distribution

Weight.....	350 lbs.
Width.....	24"
Height.....	26"
Depth (not including blower).....	25"
Height to Top of Flue.....	28"
Diameter of Flue.....	7" I.D.
Door Opening.....	11-3/8 x 17 3/4
Firebox.....	18" D x 21" W x 14" H
Floor to Bottom.....	5'
Refractory Lining.....	1 1/4" thick
Blower (Standard Equipment).....	76 C.F.M.

LAKEWOOD
Cottager
 with blower and heat exchanger



Perfect for a small cottage or large room

- Full Scandanavian baffle for efficiency
- Top flue
- Blower and heat exchanger standard

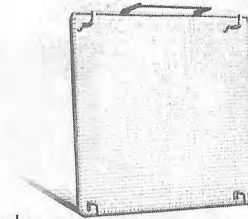
The small 76 CFM blower aids in circulating the heat around your room or house. Even heat is the result. The blower is standard equipment.

Weight.....	250 lbs.
Width.....	16 1/2"
Height.....	25 1/2"
Length.....	29"
Height to Top of Flue.....	26 3/4"
Diameter of Flue.....	6" I.D.
Door Opening.....	9 1/2" x 9 1/2"
Firebox.....	14" x 14" x 22 1/2"
Floor To Bottom.....	5'
Refractory Lining.....	1 1/4" thick

LAKEWOOD
Stove
Accessories

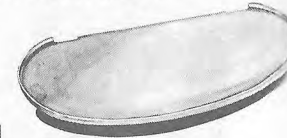
Fire Screens:

- Available to fit all Lakewoods
- Heavy duty wire mesh
- Matt black finish to match stove



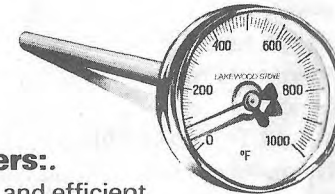
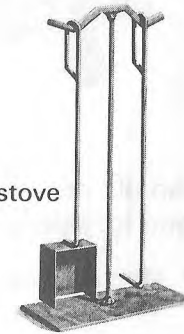
Ash Apron:

- Heavy gauge steel
- Matt black finish to match stove
- Extends front of stove for safe, easy loading



Tool Sets:

- Heavy and solid
- Matt black finish to match stove
- Attractive and functional



Thermometers:.

- Only accurate and efficient way to operate an airtight stove
- Easy to use in any installation
- Easily read dial
- High temperature range to 1000°F.

LAKEWOOD
STOVES

Manufactured by

LAKEWOOD
MANUFACTURING LTD.

P.O. Box 489, Bobcaygeon, Ontario K0M 1A0 (705) 738-2393

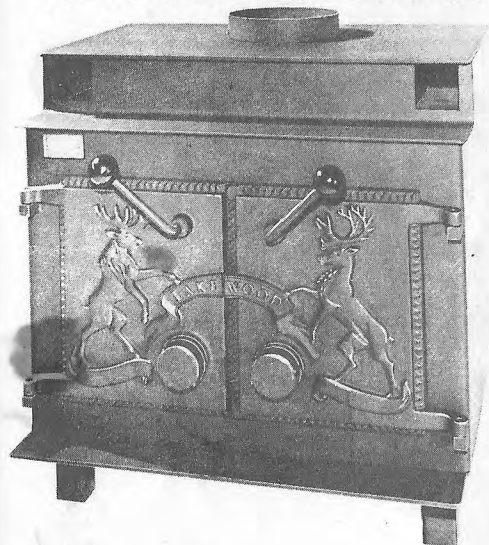
YOUR LOCAL DEALER IS

SUN COMFORT
WOOD HEATING EQUIPMENT

31 ELIZABETH ST. - TRENTON, ONT.

392-8986

LAKWOOD
Elk Double Door
 with blower and heat exchanger



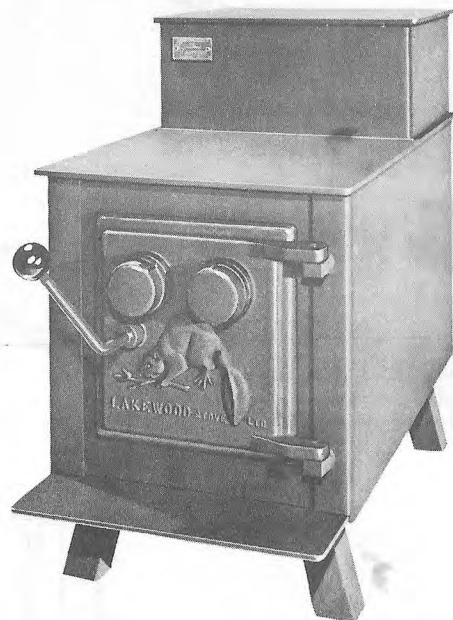
For those who are energy conscious but appreciate the beauty of a good wood stove.

- An airtight stove with fully gasketed door
- Baffled door for preheated combustion air
- Heat exchanger and blower are standard equipment

Enjoy the beauty of this fine wood stove all evening and wake in the morning to a warm house or cottage.

Weight	500 lbs.
Width	28 1/2"
Height	32"
Depth (not including blower)	25 1/4"
Height to Top of Flue	32 3/4"
Diameter of Flue	8" I.D.
Door Opening	13 1/2" H x 22" W
Firebox	18 1/2" D x 25" W x 20" H
Floor to Bottom	5"
Refractory Lining	1 1/4" thick
Blower (Standard Equipment)	76 CFM

LAKWOOD
Canadian
Stepstove

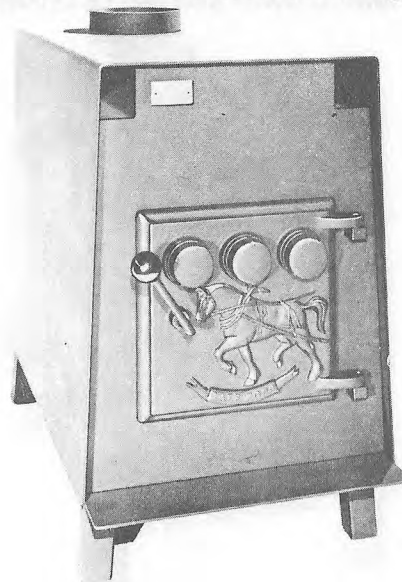


An old design made for modern times and for sale, efficient heating.

- Unique baffled door
- Two cooking surfaces

Weight	350 lbs.
Width	17-5/8"
Height (overall)	30 1/4"
Height of Front	23"
Length	33-1/8"
Height To Top Of Flue	29 1/2"
Diameter of Flue	6" I.D.
Door Opening	10" x 11"
Firebox	14" W x 15" H x 26" D
Floor to Bottom	6"
Refractory Lining	1 1/4" thick

LAKWOOD
Workhorse
 with blower and heat exchanger



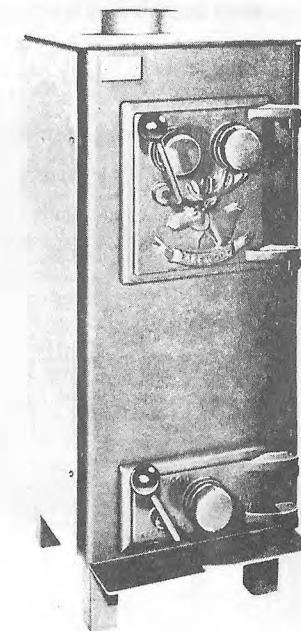
A completely new concept designed to save splitting of logs less than 12" in diameter.

- An ideal stove for burning pulpy or low density wood.
- Full Scandanavian baffle for long efficient burning
 - Three air adjusters for getting wood through the 1st & 2nd stages of burning quickly
 - Heat exchanger & blower as standard equipment

This stove was designed to fill a specific need of those who have only pulpy wood or who need to heat a larger area quickly and efficiently.

Weight	500 lbs.
Width	21"
Height	37 1/2"
Length (not including blower)	39 1/2"
Height to Top of Flue	39 1/2"
Diameter of Flue	8" I.D.
Door Opening	13" x 13"
Firebox	19" W x 21" H x 32" D (7-1/2 Cubic Feet Capacity)
Floor to Bottom	6"
Refractory Lining	1 1/4" thick
Blower (Standard Equipment)	148 C.F.M.

LAKWOOD
Spacemate



The answer to the age old question. "Where to put the stove?"

- Only 16" square
- Cast iron grates and fire brick lining
- Optional heat shield and blower

Weight	225 lbs.
Width	16 1/4"
Height	39 3/4"
Length	19"
Height To Top Of Flue	41 1/2"
Diameter of Flue	6" I.D.
Firebox	15" W x 27" H x 15" D
Floor to Bottom	5"
Loading Door	10" x 11"
Ash Door	5" x 10"
Refractory Lining	1 1/4" thick