

APPENDIX "B" TO BYLAW NO. 1876

Revised August, 2016

Climatic Information for Building Design - Kimberley, BC

Latitude: 49 ° 41 ' 0 " N Longitude: 115 ° 59 ' 0 " W - Elevation (Metres): 1150

Design element	Design Value
January 2.5% design dry bulb temperature °C	-25
January 1% design dry bulb temperature °C	-27
July 2.5% design dry bulb temperature °C	31
July 2.5% design wet bulb temperature °C	18
Annual total degree days below 18 °C	4,650
Maximum 15 minute rainfall (mm)	12
Maximum one day rainfall (50 years) (mm)	59
Annual rainfall (mm)	350
Annual total precipitation (mm)	500
Moisture Index	0.38
Driving Rain wind pressure 1/5 years (Pa)	100
Hourly wind pressure 1/10 (kPa)	0.25
Hourly wind pressure 1/50 years (kPa)	0.33
Seismic Data – S _a (0.2)	0.27
Seismic Data – S _a (0.5)	0.16
Seismic Data – S _a (1.0)	0.079
Seismic Data – S _a (2.0)	0.044
Seismic Data – Peak Ground Acceleration (PGA)	0.14

Elevation between 1,150 and 1,350 metres

Ski hill/resort area, Deer Run Drive, Dogwood Drive, Stemwinder Drive, Kodiak Crescent, Trickle Ridge Place, Alpine Crescent, and Townsite neighbourhoods

Ground snow load, snow component S _s (50 years)	5.3 kPa / 111 lbs/ft ²
Ground snow load, rain component S _r (50 years)	0.3 kPa / 6.3 lbs/ft ²

Elevation between 1,000 and 1,150 metres

Downtown Kimberley, Swan Avenue, Blarhmont, Chapman Camp, and Forest Crowne neighbourhoods

Ground snow load, snow component S _s (50 years)	4.0 kPa / 84 lbs/ft ²
Ground snow load, rain component S _r (50 years)	0.2 kPa / 4.2 lbs/ft ²

Elevation at or below 1,000 metres

Marysville, Sunflower Drive, Riverbend Lane, and River Ridge Way neighbourhoods

Ground snow load, snow component S _s (50 years)	3.1 kPa / 65 lbs/ft ²
Ground snow load, rain component S _r (50 years)	0.2 kPa / 4.2 lbs/ft ²



KIMBERLEY

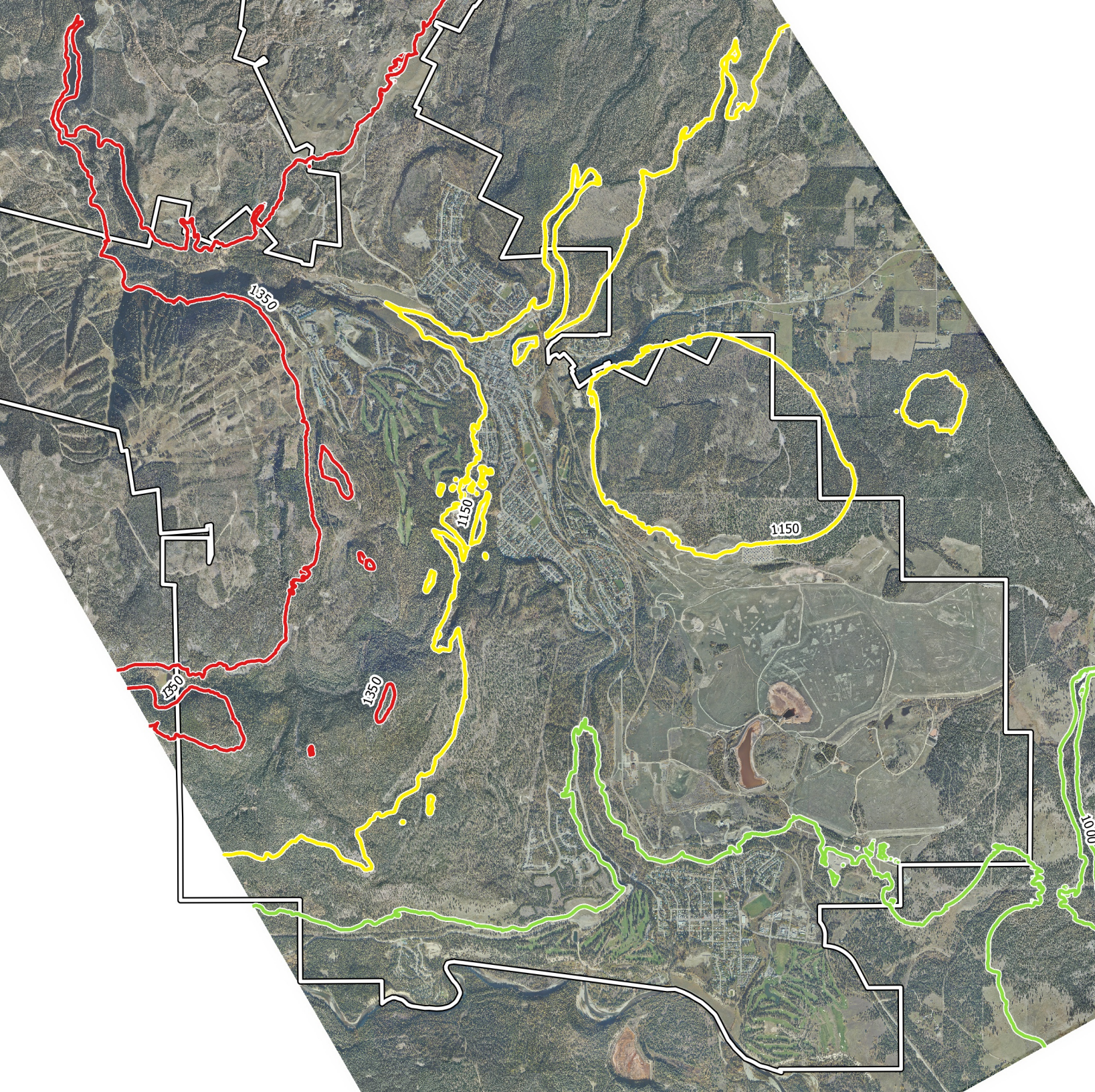
BC • CANADA

**Bylaw 1876
Appendix B
Proposed Elevations**

Legend

Properties

-  City Boundary
-  1000m
-  1150m
-  1350m



500 0 500 1000 1500 2000 m

1:50,000

© ORTHOSHOP Geomatics Ltd. All rights reserved.