

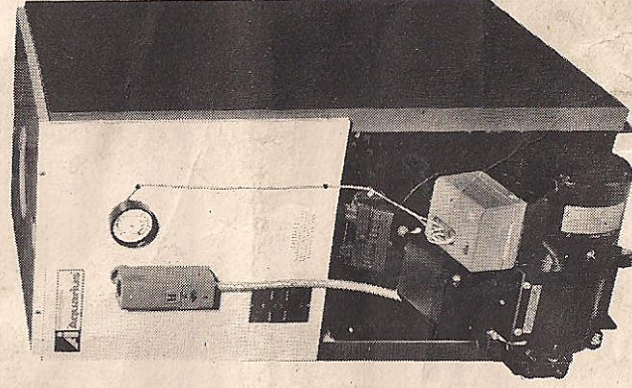
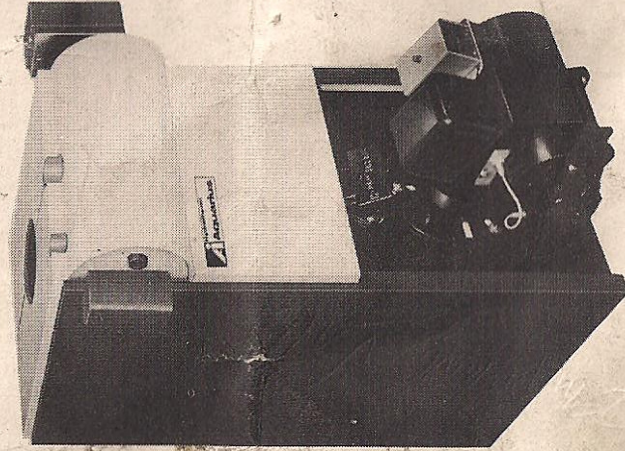


HYDROTHERM, INC.
DIVISION OF
AUTOMATION INDUSTRIES, INC.
ROCKLAND AVE.
NORTHVALE, N.J. 07647

INSTALLATION GUIDE

For
"AQUARIUS" Oil Fired Boilers
Models
OAB-105/126/154/190/210/245
P-OA-126/154/190/210/245
P-OA-126/154/190/210/245-T

G-21



NOTE:

All electrical wiring is to be done in accordance with the National Electrical Code and all local codes.

INTRODUCTION

AQUARIUS is a modern, automatic oil fired boiler designed exclusively for hot water (hydronic) heating systems and must not be used for steam. Through application of sound engineering principles, the heat exchanger will transfer nearly twice as much heat for each pound of cast iron as was heretofore possible. This results in extreme compactness, low fuel bills and makes AQUARIUS the ideal boiler for hot water heating systems, including convectors and panel heating installations. All boilers have a 100 psi ASME working pressure rating and are well suited for volume hot water heating through the use of heat exchangers and storage tanks. Being constructed of non-corrosive cast iron, the AQUARIUS boiler will give long life, safe and dependable service.

All boilers are shipped factory assembled and wire and installation consists essentially of accomplishing outside piping, electrical, flue and fuel connections. Careful reading of this guide prior to installation will help to accomplish a good installation in minimum time.

SHIPMENT

Each "OAB" boiler is shipped in 1 crate containing:

- 1 Boiler assembled with base, burner, combustion chamber, jacket, absorption unit, cadmium cell burner control, hi-limit aquastat and temperature/pressure indicator.
- 1 ASME Pressure relief valve
- 1 Draft Control

NOTE: Unpack shipment carefully and check for completeness and damage. Our responsibility ceases upon delivery to carrier in good condition. Claims for damage or shortages must be filed immediately against carrier by consignee.

NOTE:

All electrical wiring is to be done in accordance with the National Electrical Code and all local codes.

Each "P-OA" boiler is shipped in 1 crate containing:

- 1 Boiler assembled with base, burner, combustion chamber, jacket, absorption unit with provision for tankless coil, cadmium cell burner control, hi-limit aquastat, circulator, diaphragm expansion tank, air vent and temperature/pressure indicator.
- 1 ASME Pressure relief valve
- 1 Thermostat
- 1 Draft Control

Each "P-OA-T" boiler is shipped in 1 crate containing:

- 1 Boiler assembled with base, burner, combustion chamber, jacket, absorption unit with tankless coil, cadmium cell burner control, hi-limit aquastat, boiler control, circulator, diaphragm expansion tank, air vent, zone valve and temperature/pressure indicator.
- 1 ASME Pressure relief valve
- 1 Thermostat
- 1 Draft Control

P-OA-T 154

NOZZLE 1-10 8° Solid

CHIMNEY REQUIREMENTS

1. Chimney construction must be in accordance with the National Board of Fire Underwriters and all local codes and sized as listed in AQUARIUS "OA" series catalog HY423.
2. The flue-gas exit of the chimney must be at least 3 feet above the highest point where it passes through the roof of the building and at least 2 feet higher than any portion of a building within