



The GranView

High Efficiency Zero Clearance Fireplace



Ancient Iron Door and Lower Louver

WILKENING
Fireplace



GranView with Clean Face Option and Gravity Vent Kit



GranView with Prairie Door and Designer Louvers



Rectangular Black Door



Ancient Iron Door



Arched Black Door



Prairie Door

DOOR OPTIONS



Maximum Fire View

With a 33" W x 17 ½" H opening, the GranView has the largest fire view of any wood burning fireplace in its class. This window of flame provides a beautiful focal point for any room, without any unsightly internal obstructions.

95.4% COMBUSTION EFFICIENT DESIGN

While you're relaxing in the warmth of the fire, the GranView is hard at work burning the smoke that is wasted by normal fireplace designs. This clean-burning fireplace limits hydrocarbon emissions, reducing creosote accumulation in the chimney.

FLEXIBLE DESIGN OPTIONS

The elegant style of our arched or rectangular doors can be enhanced with optional nickel plating or Ancient Iron to create a fireplace design with unlimited decorating options. Choose the look you desire by finishing your installation with stone, tile, stucco or any manufactured facing material to create the fireplace of your dreams.

UNIQUE AIR SUPPLY SYSTEM

The GranView incorporates a unique combustion air supply system that directs outside air to every supply port inside the fire chamber. By directly connecting the combustion air from outside the home to the unit, heated room air is not lost up the chimney when you are burning a fire. "Fireplace odor" or cold drafts will never invade your home when the fireplace is not in use.

A specially designed air wash provides ample flow of incoming air to continually sweep the glass clean and create a dramatic flame pattern.

ZERO CLEARANCE INSTALLATION

Our zero clearance surround provides easy, cost effective installation. A special foundation or support is not required to install the fireplace.



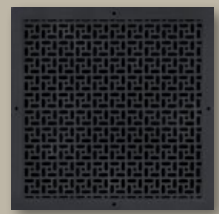
Rectangular Nickel Door



Arched Nickel Door

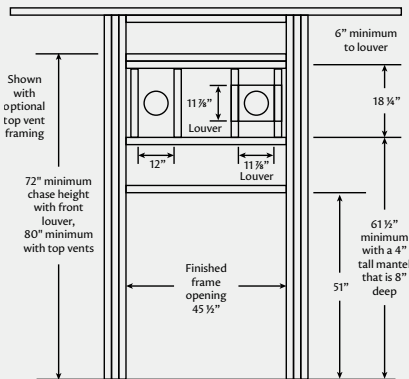
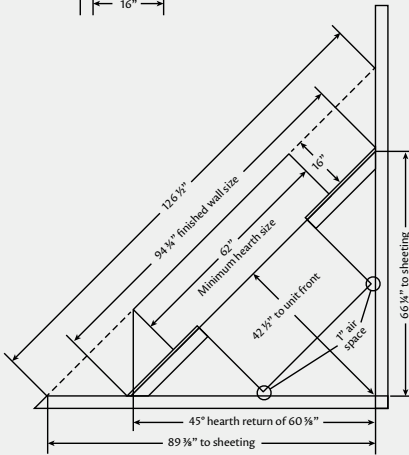
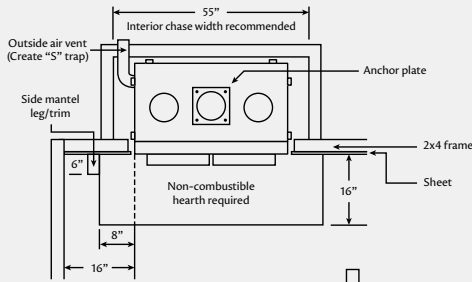
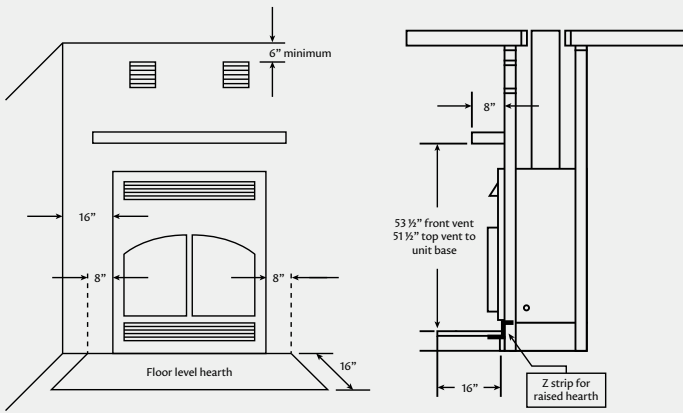


Arched Ancient Iron



Optional Designer Grill

DOOR OPTIONS



GranView with Arched Nickel Door and traditional louvers

SPECIFICATIONS

BTU output	54,000
Estimated heating capacity	2,000 sq. ft.
Firebox capacity	4.2 cu. ft.
Emissions	2.72 g/kg
Overall efficiency	72%
Log length	24" average
Framing dimensions	45 1/2" W x 51" H x 24" D
Chimney size	8" diameter
Weight	685 lbs.
Mobile home approved	
Conforms to EPA requirements	

INCLUDED	OPTIONAL FEATURES
Main firebox/heat exchanger	Air circulation louvers in Traditional, Designer and Ancient Iron style
Air tight door with ceramic glass *	Dual heat vent kit
Five foot outside air kit and vent	Multiple blower designs
Super reflective inner liner	Heat transfer kit
	Masonry facing kit for veneer finishes
	Clean face kit

* Choose from multiple door designs

YOUR DEALER IS:



9608 State 371 N.W., Walker, MN 56484

www.wilkeningfireplace.com
 wilkenfp@eot.com | 800-367-7976

Photography by Lance White - www.lancewhitephotography.com
 Brochure Design by ColorForge Creative - www.colorforge.com