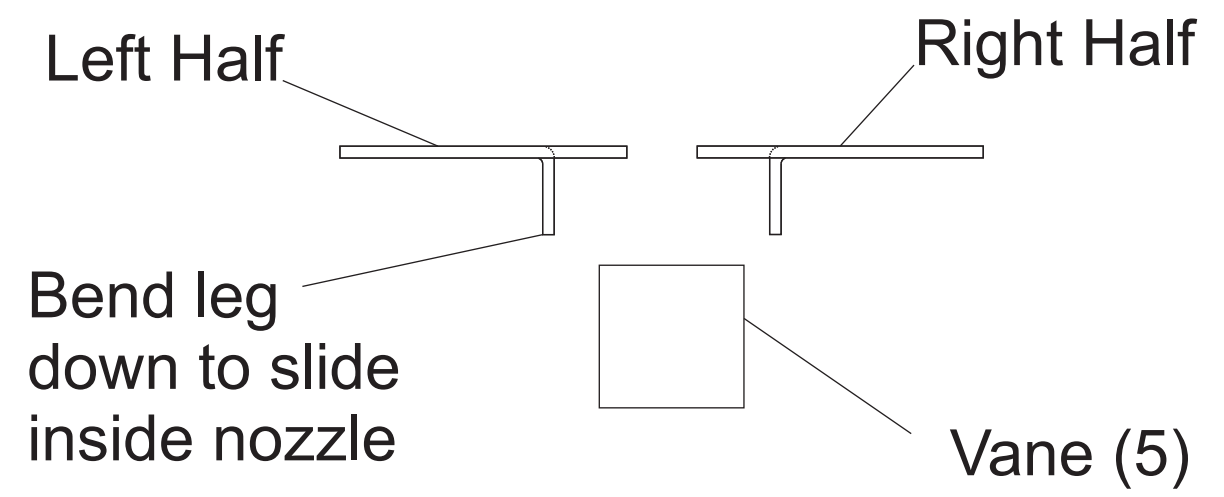
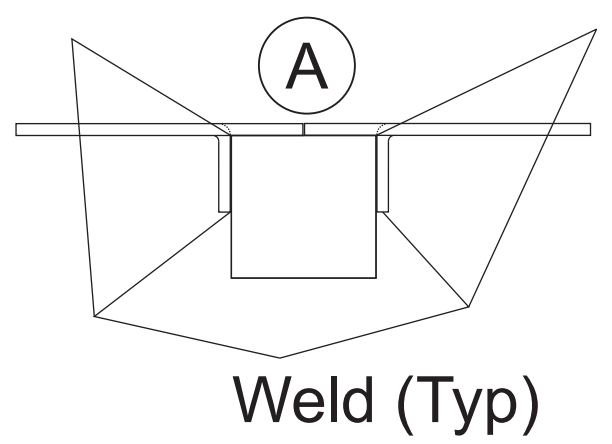
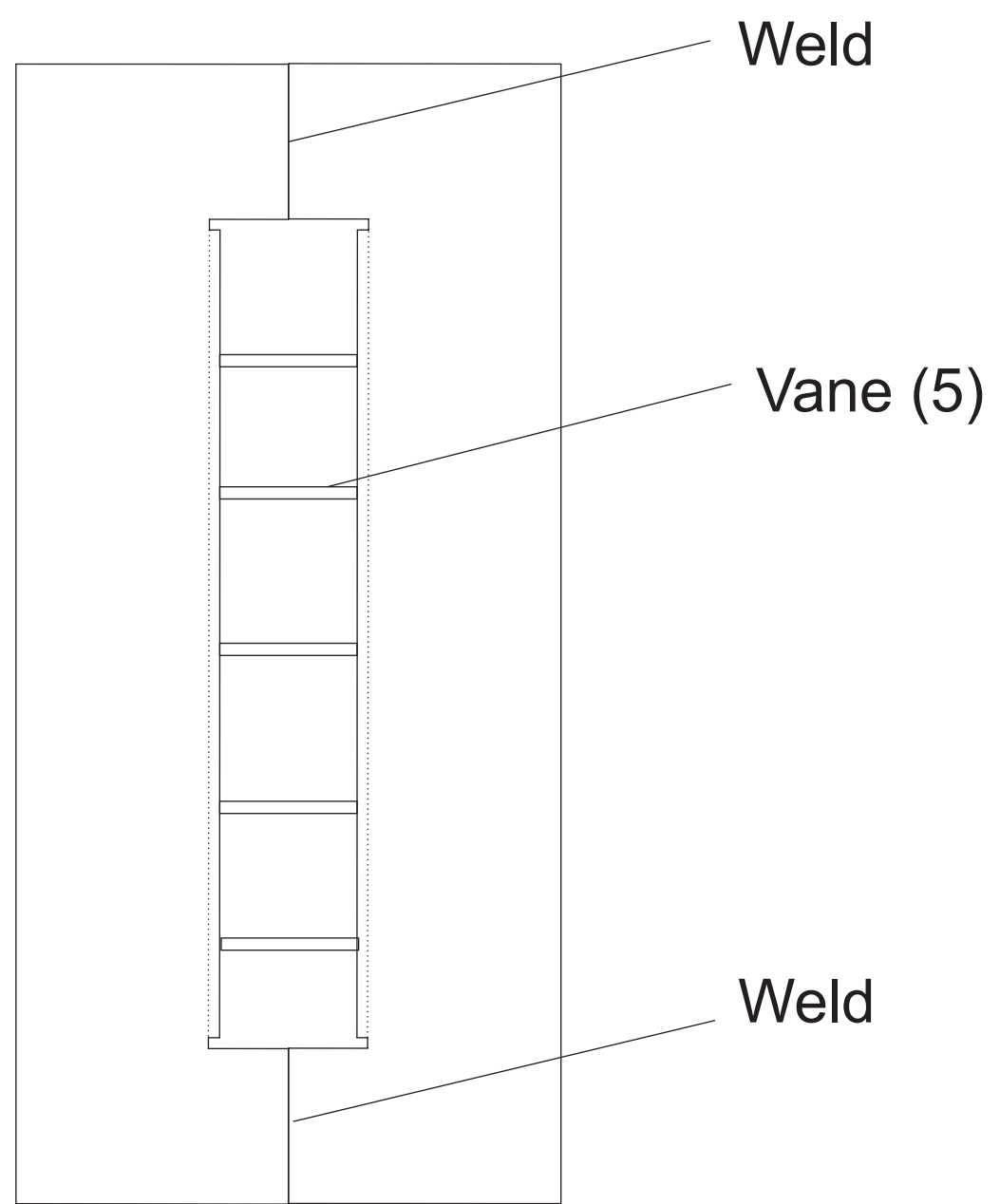


Nozzle Plate  
3 Feb 2015  
JT Wall

Rev	Date	Description
A	5 Feb 2015	Added weld to vane top.



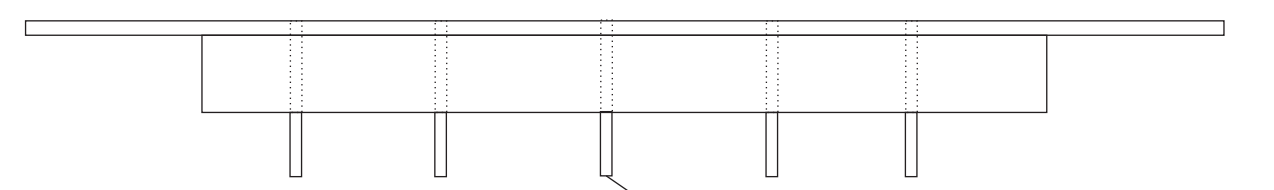
Exploded View

Tack weld vanes on bottom only. That way they can be replaced easily.

Does it warp? A little, but I just place on bench and pound flat again.

I have used this for 5 months with no issues.

Material: 1/16-inch 304 stainless steel sheet



Scale: None