

PART II CLEARANCES TO COMBUSTIBLE SURFACES

WARNING

FAILURE TO ALLOW THE REQUIRED CLEARANCES TO COMBUSTIBLE MATERIALS OR TO PROVIDE ADEQUATE FLOOR PROTECTION CAN CAUSE A HOUSE FIRE. SUCH A FIRE CAN RESULT IN DAMAGE TO PROPERTY AND SERIOUS INJURY OR DEATH.

TABLE #1, KEJ-1102

SEE NOTES PAGE 38	MINIMUM CLEARANCES IN INCHES, see page 40						ILL. FIG.	
	A	B	C	D	E	F		
↓	RESIDENTIAL INSTALLATIONS						↓	
	Roof exit							
1)	Parallel and corner	16	9	27	16.5	14	25	21, 23
2)	Reduced side	10	9	21	16.5	--	--	21, 23
3)	Reduced corner	--	--	--	--	6	17	21, 23
4)	Close clearance	10	6	21	13.5	--	--	21, 23
	Wall exit							
5)	Parallel and corner	16	11	27	18.5	14	25	24, 25, 26
6)	Reduced side	10	11	21	18.5	--	--	24, 25, 26
7)	Reduced corner	--	--	--	--	7	18	24, 25, 26
8)	Alcove, roof exit	9	6	20	13.5	--	--	22
	MOBILE HOME INSTALLATIONS							
	Roof exit							
9)	Parallel and corner	10	6	21	13.5	6	17	21, 23

TABLE #2, PEJ-1003

SEE NOTES PAGE 38	MINIMUM CLEARANCES IN INCHES, see page 40						ILL. FIG.	
	A	B	C	D	E	F		
↓	RESIDENTIAL INSTALLATIONS						↓	
	Roof exit							
1)	Parallel and corner	16	9	25.5	16	14	25	21, 23
2)	Reduced side	10	9	19.5	16	--	--	21, 23
3)	Reduced corner	--	--	--	--	6	17	21, 23
4)	Close clearance	10	6	19.5	13	--	--	21, 23
	Wall exit							
5)	Parallel and corner	16	11	25.5	18	14	25	24, 25, 26
6)	Reduced side	10	11	19.5	18	--	--	24, 25, 26
7)	Reduced corner	--	--	--	--	7	18	24, 25, 26
8)	Alcove, roof exit	10	6	19.5	13	--	--	22
	MOBILE HOME INSTALLATIONS							
	Roof exit							
9)	Parallel and corner	10	6	19.5	13	6	17	21, 23

CLEARANCE ILLUSTRATIONS

Fig. 21  
Roof exit,  
Corner,  
Mobile Home,  
Residence,  
and  
Residential  
Close clearance

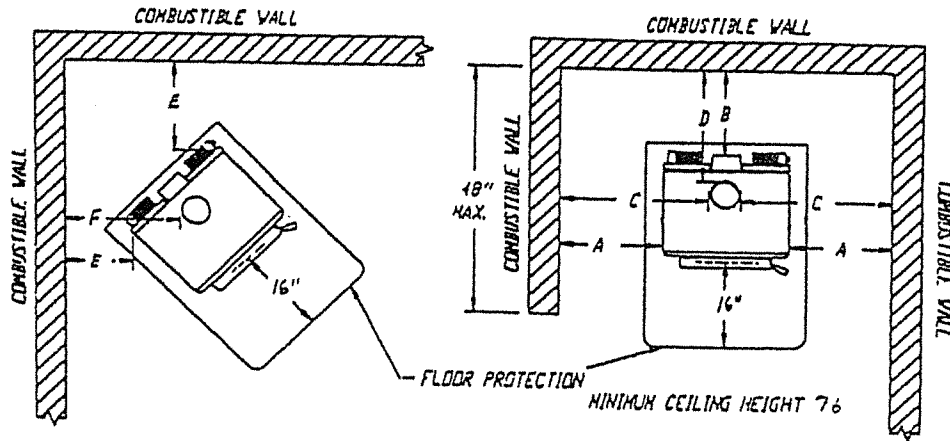


Fig. 22  
Roof exit,  
Alcove,  
Residence

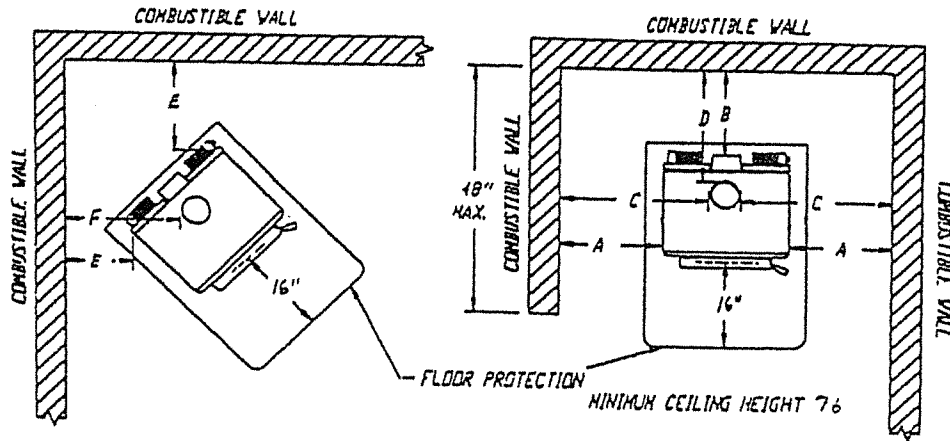


Fig. 23  
Roof exit,  
Parallel,  
Mobile Home,  
Residence  
and  
Residential  
Close clearance

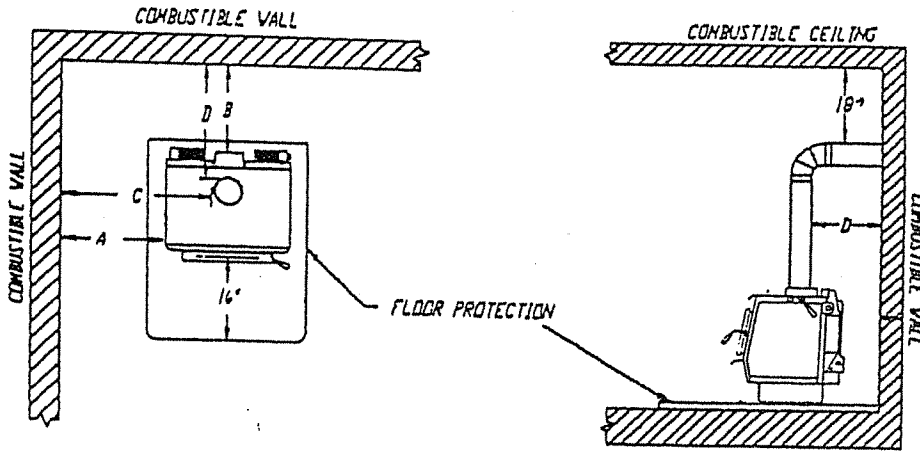


Fig. 24  
Wall exit.  
Side view  
of Figs.  
25 and 26.

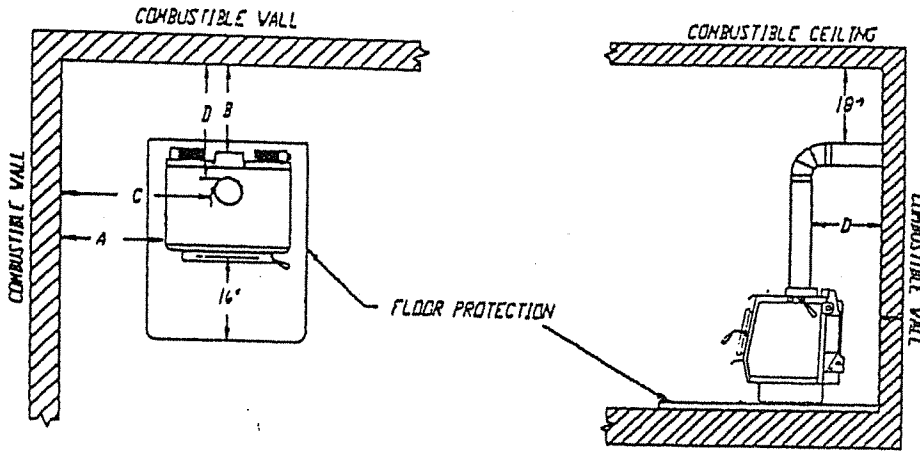


Fig. 25  
Wall exit,  
Parallel,  
Residence.

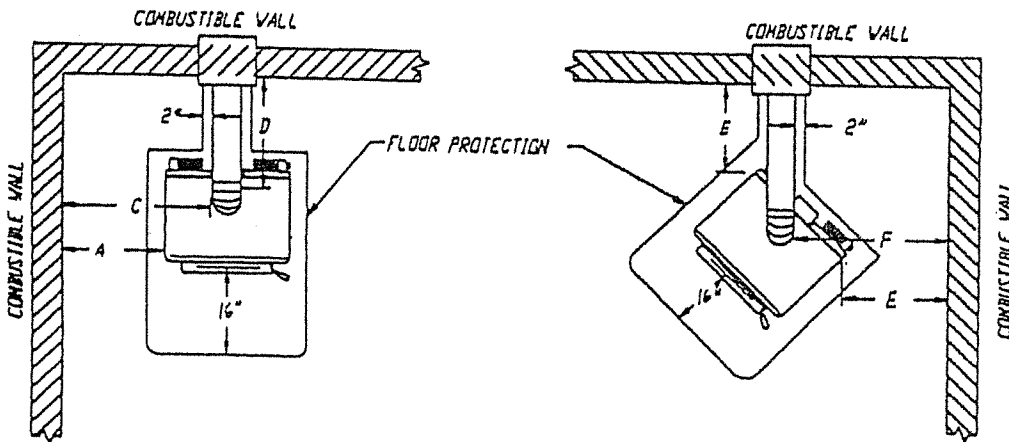


Fig. 26  
Wall exit,  
Corner,  
Residence.

