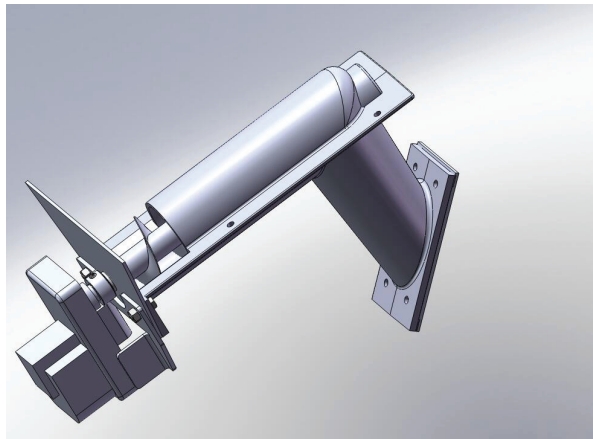


BC7000 Auger Housing Assemble

All BabyC & Winchester Pedestal



- Turn off power on control panel and unplug from the power supply.
- Insert the (4) bolts P1175 from the front side of the firebox.



- Carefully align the fuel feed system with the bolts and gasket.
- Start all bolts by hand and tighten to finger tight.
- Using a 45 deg square line the auger housing up to the back air shell.



- Tighten the auger housing bolts using a wrench.
 - Tighten the top two bolts in the order shown.
 - Tighten the lower two bolts in the order shown.

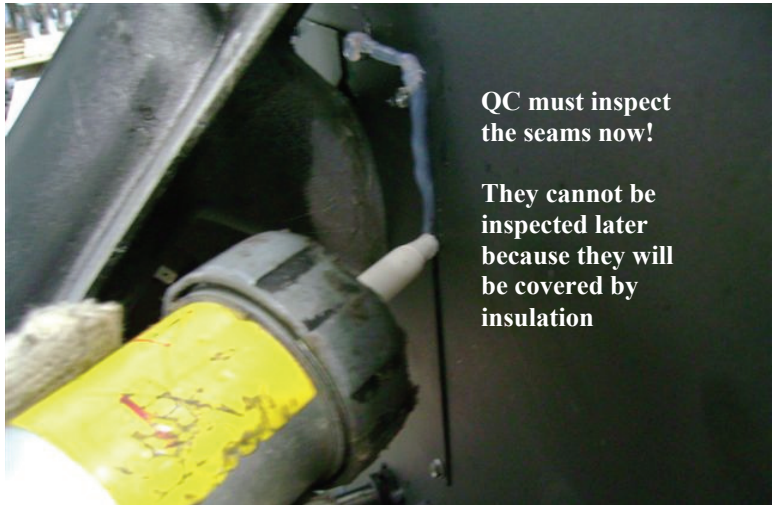
Always tighten the bolts in this order to insure consistent alignment of the fuel feed system



- Install the split collars removed earlier around the auger housing using the 4 tek screws.



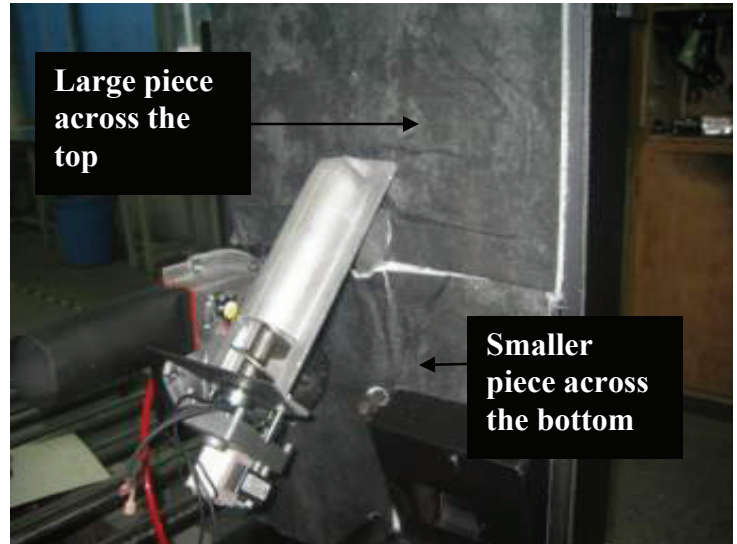
- Apply silicon around the edges of the air shell, igniter collar, air inlet pipe, and room air blower bracket. Smooth all seams with your finger.
- Apply silicon around the auger housing and around the edges of the split collars this holds the insulation tight around the housing and the seals any air gaps around the collars.



QC must inspect the seams now!

They cannot be inspected later because they will be covered by insulation

- Apply RTV to the back of removable air shell in an S Pattern.
- First attach the larger insulation piece across the top of the rear air shell.
- Second, attach the lower insulation piece
- Align the seams with no overlap or gaps



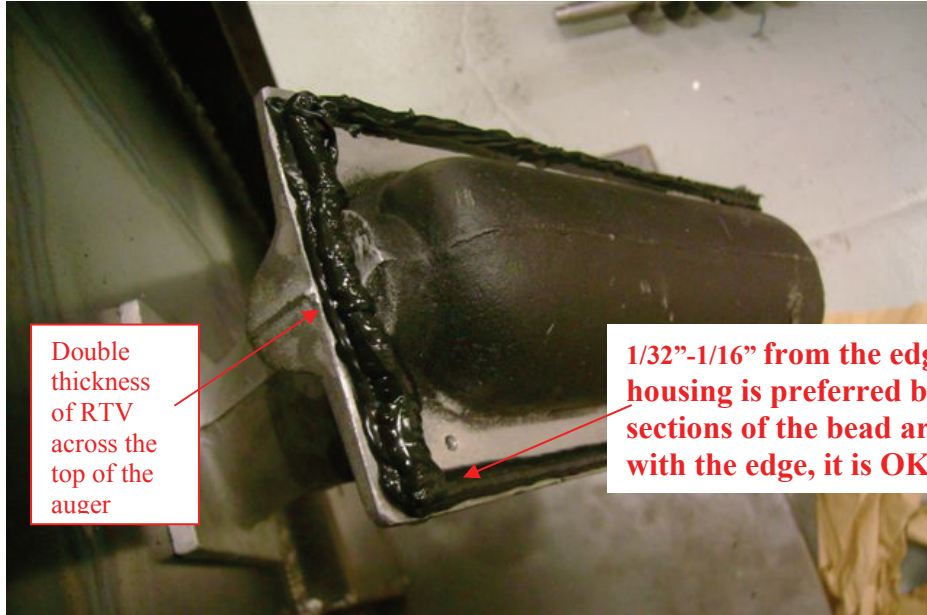
- Use flat plate to apply even pressure across insulation. This makes the RTV flow into the fiberglass and promotes good adhesion



- Inspect the housing area where the hopper attaches for residual RTV or other material that will interfere with the how the hopper sits on the auger housing. Remove as required

- Using the pneumatic RTV dispenser, apply black RTV to auger housing

NOTE: The bead should be 3/16"-1/4" in diameter and 1/32"-1/16" from the edge of the housing. When you attach the hopper in step 4, RTV should squeeze out and then be smoothed with your finger. **RTV must be visible all around the outside of the hopper.**



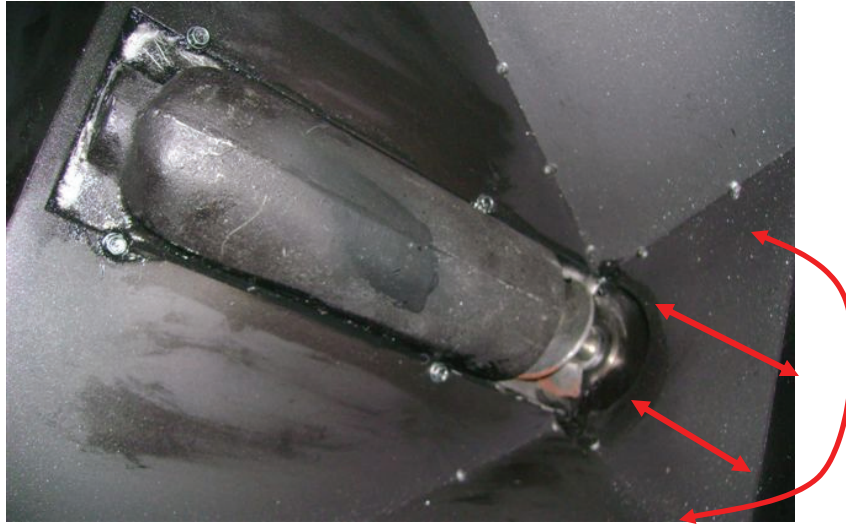
- Apply black RTV to area of the hopper that will press against the auger flange plate as

Verify hopper has been notched and cleaned according to procedure.



- Position the hopper on the auger housing. Bolt in place using 4-#8-tek screws.
- Smooth RTV with your finger.
 - make sure there is no silicone in the auger area.

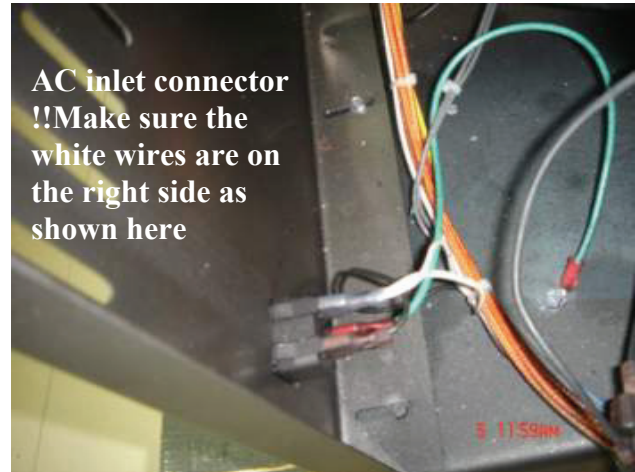
- Also smooth RTV on the outside of the hopper and around the auger housing flange.



- Shine light from inside of the hopper and check to make sure this is no light visible from outside.



- Set the back panel so it is flush with the edge of the base.
- Attach the back panel to the main body with P003053 screws.
- Insert the P003230 AC inlet connector into the cutout in the back panel.

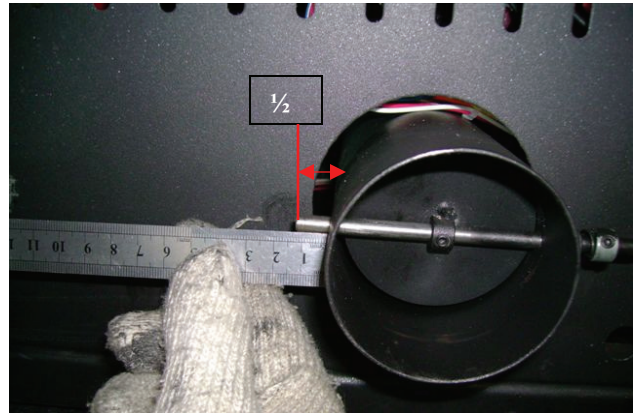
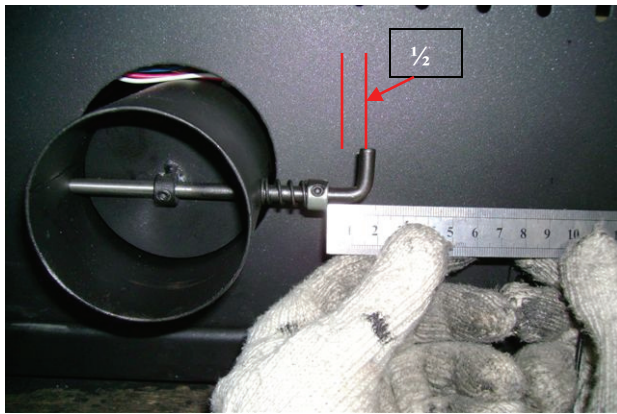


- Select the damper rod, the collar, the damper spring, and the circular metal plate required for installing the air intake damper assembly.
- Slide collar over shaft and do not tighten.
- Slide Damper Spring over shaft.



- Slide the damper plate into the 3" air intake tube.
- Set the collar so there is 12 +/-2mm space between the collar and the bend in the rod as shown.
- Insert shaft with spring and collar attached into the hole on the right side of the 3" tube, through the mount on the circular metal plate, and into the hole on the left side of the 3" tube.

- Compress the spring until the shaft protrudes $\frac{1}{2}$ " through the right side of the 3" tube.
- Make sure the metal plate is vertical and the rod bend is pointing up.



- Tighten screw on metal plate. The dimension from the Base to the top of the Front Face is $29 \frac{15}{16}$ ". Gasket must layer at a minimum of $30 \frac{1}{16}$ " for proper seal between the Top Lid and Hopper.
- The ideal gasket compression is $\frac{1}{8}$ "



- Before installation of top, check to be certain gasket material is correct height for good seal around hopper. If OK, carefully position top over hopper and front of unit.

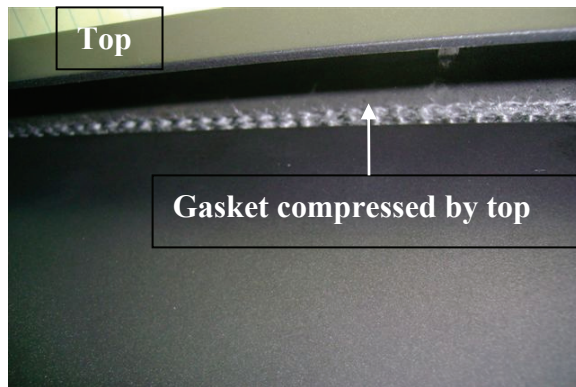
- Press down on the top to compress the gasket.
- Align the mounting holes in the top with the main body sides and rear panel back.
- Attach using 2 #10-tek screws.



One person pressing down while the other person inserts the screws



- Confirm gasket is compressed all around



- Attach the top to the back panel using 5- #8 tek screws. Make sure top lid is level as shown.

- Place a 1/8" spacer between the side panel and top as shown.
- Align the side panel hinge holes with the predrilled holes in the back panel. Attach side panel hinge to back panel with #8 tek screws.

