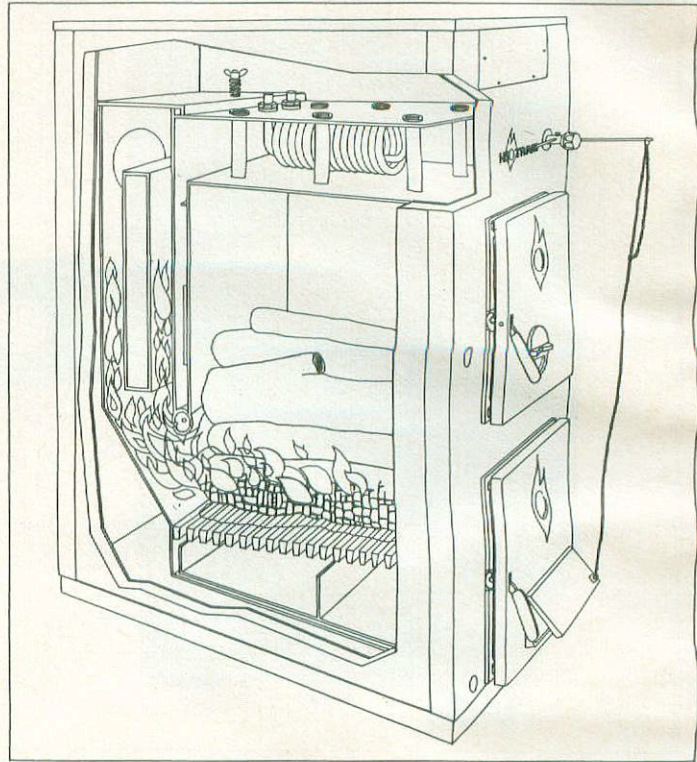
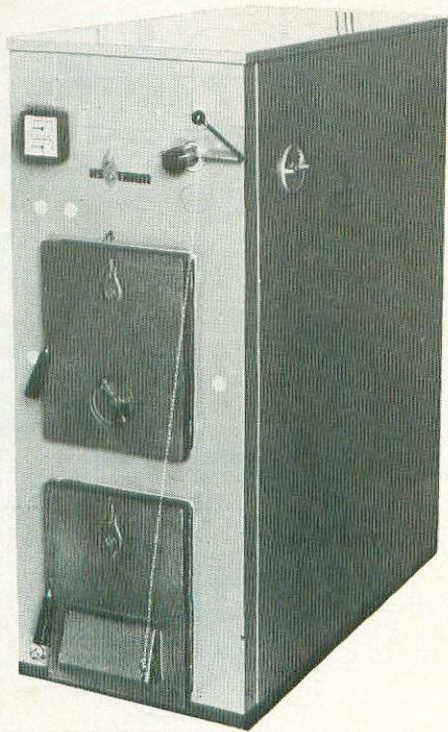


HS TARM Type MB-Solo Wood-fired Boiler



Manufacturer's Comment

The HS Tarm Type MB-Solo is a multi-purpose boiler for hot water heating systems. The MB-Solo is available equipped to burn wood or coal, or can be supplied as an oil- or gas-fired boiler.

Installed as a solid fuel-fired boiler in combination with an existing oil or gas-fired boiler (as an "add-on"), the MB-Solo allows you to heat your entire house and to provide hot tap water by burning wood or coal. At your discretion, solid fuel may be relied upon to supply all of your home's heat or merely part of it. And if the fire should die down or be allowed to go out, automatic "no-hands" controls will activate the oil or gas burner on your present boiler to guarantee uninterrupted heating.

Installed alone as an oil- or gas-fired boiler, the HS Tarm MB-Solo's easy conversion to solid-fuel operation protects you against power failure or interruptions in your supply of fossil fuel. And even if you choose to never burn solidfuel, the MB-Solo operates as efficiently on oil or gas as any modern single-fuel boiler.

The HS Tarm MB-Solo's huge

firebox has large cast iron doors to facilitate wood loading and ash removal. The wood fire is controlled by a (non-electric) automatic draft regulator which will safely maintain boiler temperature *even during power failures*. Plus, with two secondary air inlets, baseburning firebox, and a large heat exchange surface, the MB-Solo supplies maximum heat from wood, coal or coke.

The flexibility and the wood/coal capability of the HS TARM MB-Solo offers you the opportunity to dramatically reduce your home heating costs . . . and your dependence on oil or gas.

The MB-Solo is available in four sizes: MB-Solo 30, 40, 55, and 75. Optional features include a tankless coil for domestic hot water; shaker grates for burning coal or coke; and conversion kits for operation on oil or gas. Comparable ASME-approved models available.

Specifications

Height:	50½ in.
Width:	17¾ in. or 21 in.
Depth:	25¼ to 41½ in.
Firebox Height:	27½ in.
Firebox Width:	12½ to 15½ in.
Firebox Depth:	15½ to 27½ in.
Loading Door:	10 in. x 12 in.
Smoke Outlet:	6 in. or 8 in.
Output, Wood:	72,000 to 180,000 BTU/hr.
Output, Oil:	120,000 to 300,000 BTU/hr.
Water Capacity:	29 gal. to 55 gal.
Minimum Flue Size:	8 in. x 8 in. or 8 in. x 12 in.
Minimum Chimney Height:	20 ft.
Weight with jacket:	594 lbs. to 1,177 lbs.

Importer

HS TARM/Tekton
Route 116-B
Conway, Massachusetts 01341
800-628-9327, Ext. 55
In Mass., 800-282-7719, Ext. 55