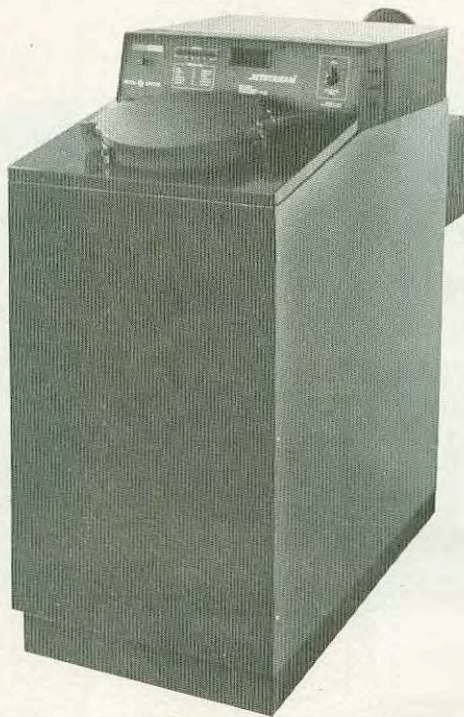


HAMPTON JETSTREAMtm Model 120 SB



Manufacturer's Comment

Now there's a wood-fired central heating system we can all feel good about. It's the Hampton Jetstream—one of the most significant advances in woodburning technology available today.

The Jetstream is not an air-tight stove or furnace. It's an innovative and proven heating system based on an advanced and highly efficient *creosote-free* method of burning wood. The Jetstream is designed to utilize the *total energy* available in wood, for more heat and less fuel consumption. Once heat has been generated, the system stores it for use when and where it's needed.

Originated by Professor Richard C. Hill at the University of Maine, the Jetstream system has been further developed and improved by Hampton engineers.

The Jetstream Concept. The heart of the Jetstream wood-fired heating system is the Jetstream combustion process (patent applied for). It combines the proper mix of fuel and air in a turbulent, **high temperature** combustion zone that consumes both wood solids and gases (creosote) in a

way that is 100% complete. After leaving the combustion zone, these clean, hot gasses pass through heat exchanger fire tubes, and are transferred to heat storage. This process enables the Jetstream to achieve an overall system efficiency of greater than 75%.

Heat Storage. When a home requires heat or hot water, the stored heat is automatically circulated into the heating system as hot air or hot water depending on the system, or hot water tank. Heat storage size will vary according to the size of the home and its heating requirements. Heat storage comes well-insulated to prevent heat loss.

Intervals Between Firings. While intervals between firings will depend on the outside temperature, the heating requirements of the home, and the heat storage capacity, they can be conveniently regulated to fit individual lifestyle, heating needs.

The Jetstream system can be adapted to older or newer homes and is available with an optional L.E.D. digital console to monitor stack and heat storage temperatures. The Jetstream has been tested and listed by the Canadian Standards Association (CSA),

Energy Testing Laboratory of Maine (ETLM) and is available ASME "H" Stamped.

For more information on your local Jetstream dealer, call (902) 892-8525, or write the manufacturer at the address listed below.

Specifications

H./W./L:	50 x 24 x 42 in.
Flue Height (top):	47 in.
Flue Size:	7 in.
Log Length Capacity:	40 in.
Door Opening:	12 ¹ / ₄ in.
Materials:	High temperature castable refractory and steel plate.
Recommended Fuels:	Hardwood or Softwood
Weight:	1400 lbs.

Manufacturer

Hampton Technologies Corporation
Box 2277, Charlottetown
Prince Edward Island
Canada C1A 8B9
902-892-8525