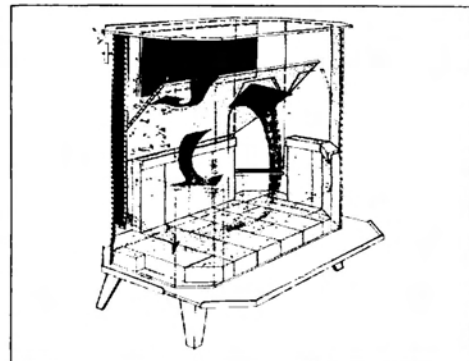
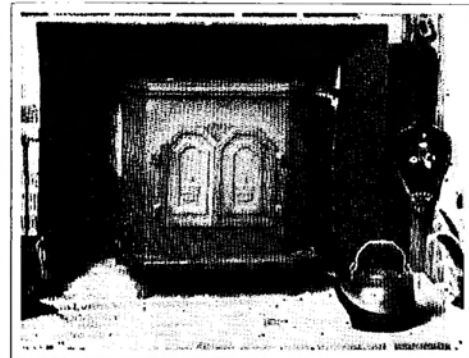
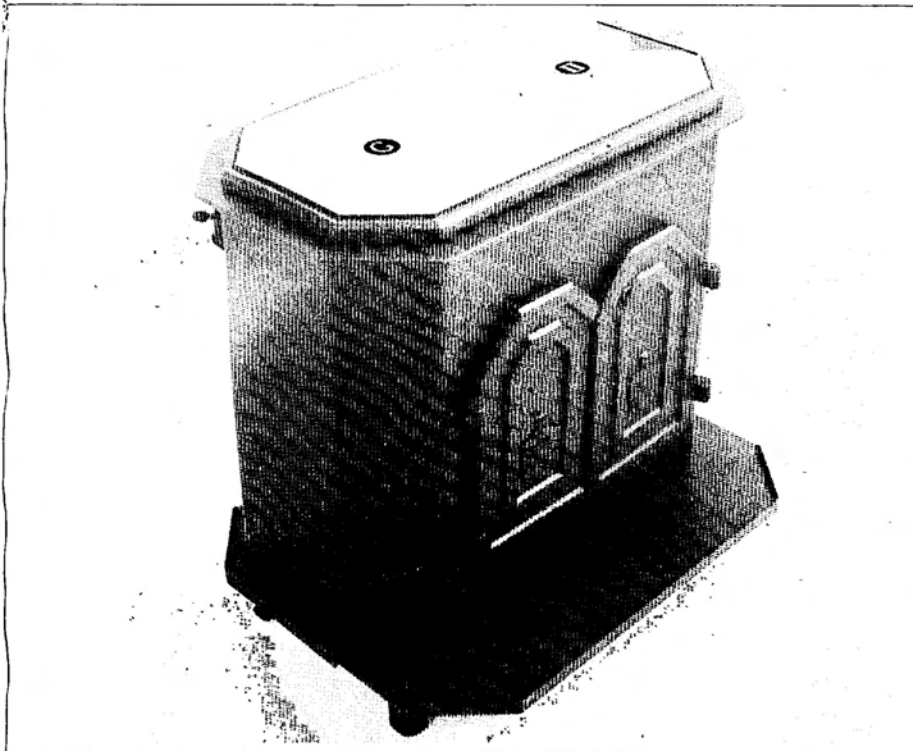


GARRISON TWO



Manufacturer's Comment

This American-built stove is best distinguished by its unique octagonal design, and includes operating features which represent a significant improvement over conventional wood stove operation.

Recognizing the widespread interest in efficient stoves that also allow fire-watching, Garrison uses double cast-iron doors as the focal point of their wide-faced octagonal stoves. The doors can be closed securely for airtight efficiency or left open with the spark guard screen in place for safely viewing the fire.

Also aware of the increased interest in woodstoves for fireplace installation, Garrison One is designed to fit the majority of American hearths and to match the height of most fireplace openings for easy venting.

One of the major operational differences is in the use of two draft controls high on the angled sides rather than one on the front. Incoming room temperature air is preheated to 330°F. as it travels downward into the combustion zone.

Introducing air from the sides makes the wood burn from both ends

toward the middle, creating a longer flame path and concentrating hot coals toward the center of the stove instead of the back. This, and the air flow pattern caused by the octagonal shape creates a more even distribution of heat, with radiation concentrated toward the front 2/3's of the stove. (Tests show that the front averages 150 degrees hotter than the back.)

When reloading, *hot coals are pushed back, not raked forward*, which completely eliminates the danger of hot coals or ashes falling out of the stove.

Combustion temperatures are increased by the dual baffle system to the point where creosote formation is significantly reduced.

Garrison's handsome design includes a sculptured relief of Fort Edgecomb on the doors, which are operated with a removable brass door handle.

Garrison's hearth features a cutout kerb so the owner can sweep ashes from either end of the hearth.

In addition to the mid-size Garrison Two, a larger model and a smaller model are available. The Garrison One weighs 390 lbs. The Garrison Three weighs 150 lbs.

Garrison Four, a coal burning stove, is also available, as is a new fireplace insert with blower add-ons. Specifications below are for Garrison Two, shown above.

Specifications

H./W./D.: 25½ x 26 x 19 in. *Flue Height (top):* 24 in. *Flue Size:* 6 in. *Log Length:* 16 to 18 in. *Door Opening:* 10 x 14 in. *Materials:* ¼ in. hot rolled steel, low phosphorous gray iron. *Fuel:* Wood. *Weight:* 245 lbs.

Manufacturer

Garrison Stove Works, Inc.
P.O. Box 412, Claremont,
New Hampshire 03743
603-542-8761